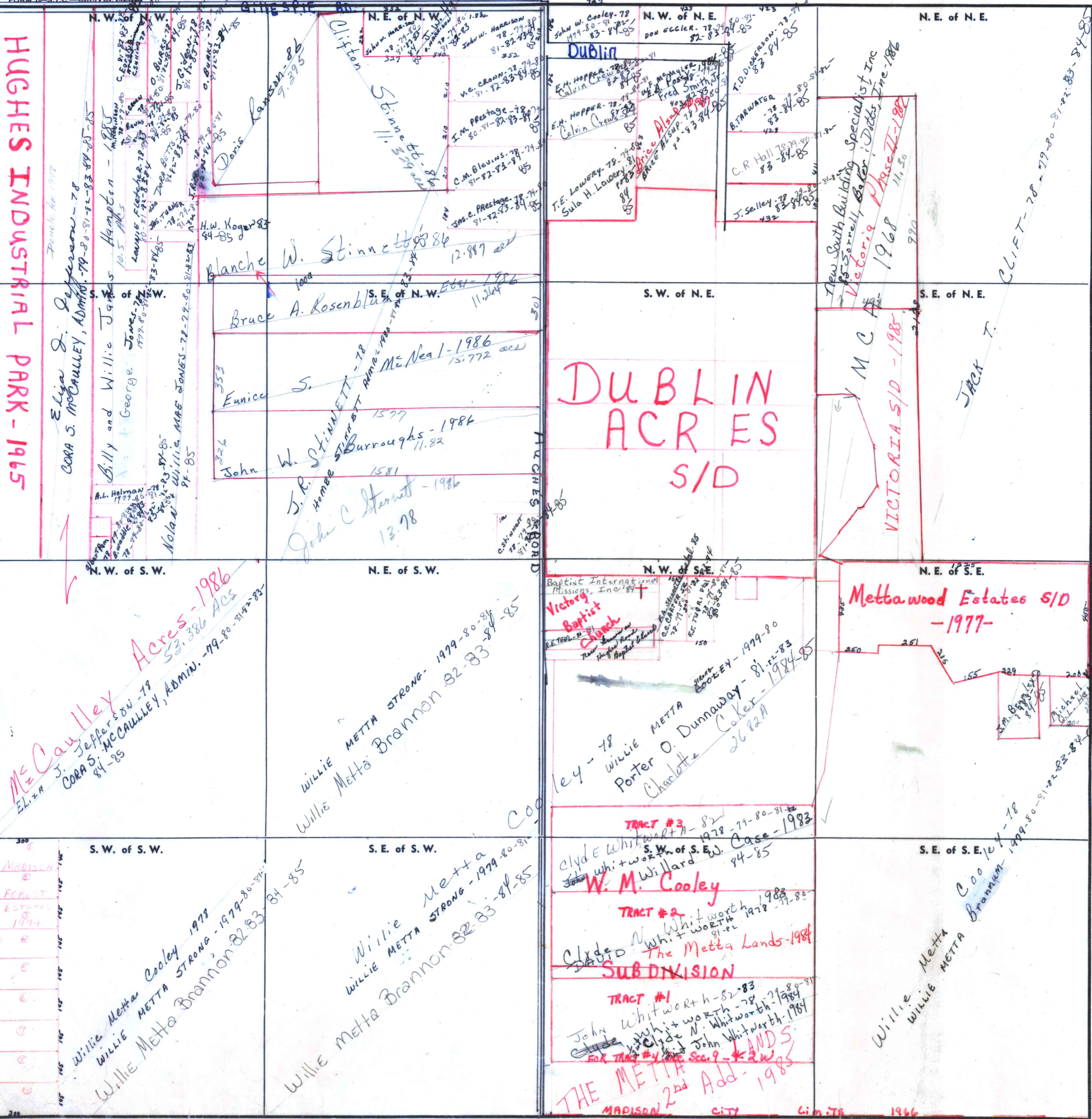


FORM 1-STC

HUGHES INDUSTRIAL PARK - 1965



McCauley Acres - 1986
 53.386 ACS
 J. Jefferson - 78
 CORA S. McCAULEY, ADMIN. - 79-80-81-82-83-84-85

DUBLIN ACRE S/D

Metta Wood Estates S/D - 1977

WILLIE METTA COOLEY 1978
 WILLIE METTA STRONG - 1979-80-81-82-83-84-85
 WILLIE METTA BRANNON 82-83-84-85

WILLIE METTA STRONG - 1979-80-81-82-83-84-85
 WILLIE METTA BRANNON 82-83-84-85

TRACT #3
 CLYDE WHITWORTH - 82
 S.W. of S.E. 1978-79-80-81-82
W. M. Cooley
TRACT #2
 CLYDE N. WHITWORTH 1978-79-80-81-82
THE METTA LANDS - 1984
SUBDIVISION
TRACT #1
 JOHN WHITWORTH - 82-83
 CLYDE N. WHITWORTH - 78-79-80-81
 JOHN WHITWORTH - 1984
FOR TRACT #4 SEE Sec. 9 - 2W
THE METTA 2nd Add. - 1985

WILLIE METTA COOLEY - 78
WILLIE METTA BRANNON - 1979-80-81-82-83-84-85