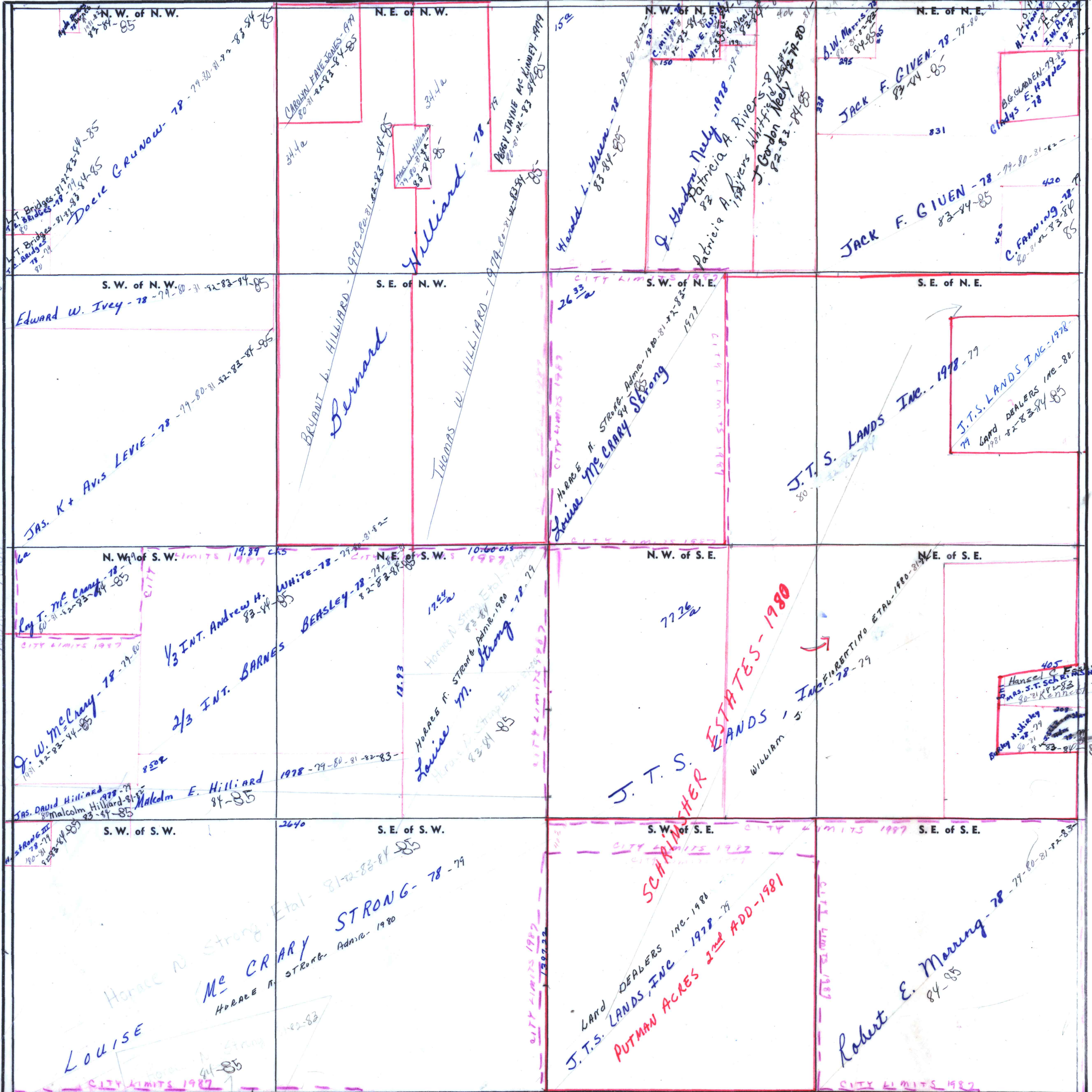


SECTION 22

TOWNSHIP 3

RANGE 2W

FORM 1-S.T.C. ROBERTS & SON, BIRMINGHAM



Scale—1 inch=300 Ft.

COUNTY

198-94-85
Maples-85
83-84-85

405
Hansel C. Foster-86
Mas. S.T. Schramm-78-79
Kenneth Jones-84-85

J.T.S. ESTATES-1980
LANDS
WILLIAM

SCHRAMM
LAND DEALERS INC-1980
J.T.S. LANDS, INC-1978-79
PUTMAN ACRES 2nd ADD-1981

Robert E. Moring-78-79-80-81-82-83-84-85

Doyle Grunow-78-79-80-81-82-83-84-85

Hilliard-78-79-80-81-82-83-84-85
Bernard
Bryant L. Hilliard-1979-80-81-82-83-84-85
Thomas W. Hilliard-1979-80-81-82-83-84-85

McCrory Strong
Louise
Horace N. Strong-Adm-1980-81-82-83-84-85
1979

J.T.S. LANDS INC.-1978-79
LAND DEALERS INC-80
1981-82-83-84-85

Edward W. Ivey-78-79-80-81-82-83-84-85
Jas. K + Avis Levie-78-79-80-81-82-83-84-85

Q. W. McCrory-78-79-80-81-82-83-84-85
1/3 INT. Andrew H. White-78-79-80-81-82-83-84-85
2/3 INT. BARNES
Horace N. Strong & Adm-1980
Louise
1978-79-80-81-82-83-84-85

LOUISE
Horace N. Strong, Etal-81-82-83-84-85
McCrory Strong-Adm-1980
Horace N. Strong
1982-83

STRONG-78-79-80-81-82-83-84-85
STRONG-Adm-1980
STRONG-78-79-80-81-82-83-84-85

J.T.S. LANDS, INC-1978-79
PUTMAN ACRES 2nd ADD-1981

Robert E. Moring-78-79-80-81-82-83-84-85