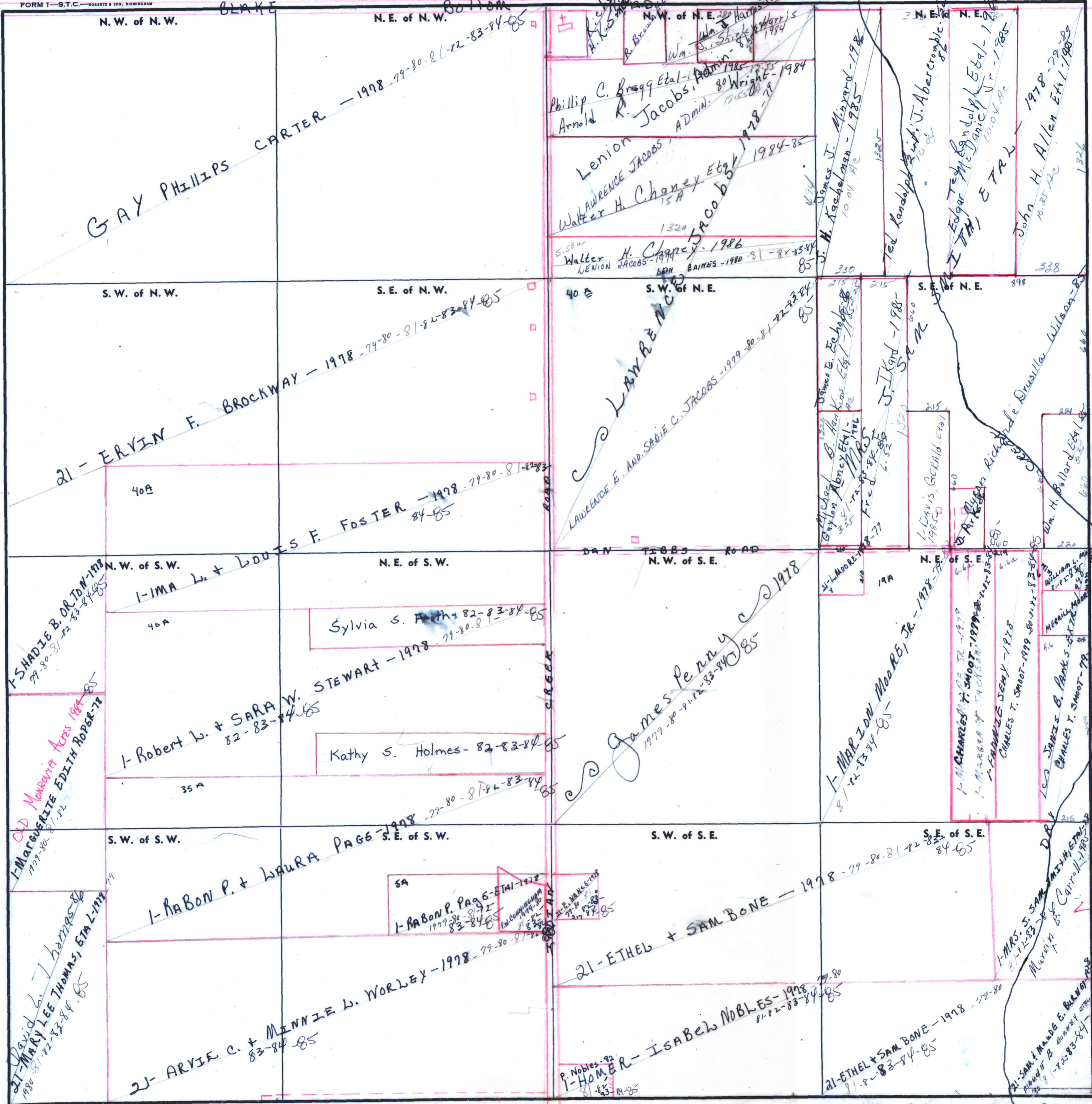


SECTION 13

TOWNSHIP

RANGE 2 W

FORM 1 - S.T.C. ROBERTS & SON, BIRMINGHAM



GAY PHILLIPS CARTER - 1978-79-80-81-82-83-84-85

21 - ERVIN F. BROCKWAY - 1978-79-80-81-82-83-84-85

LOUIS F. FOSTER - 1978-79-80-81-82-83-84-85

1 - IMA L. & LOUIS F. FOSTER - 1978-79-80-81-82-83-84-85

1 - ROBERT L. & SARA W. STEWART - 1978-79-80-81-82-83-84-85

1 - RABON P. & LAURA PAGE - 1978-79-80-81-82-83-84-85

21 - ARVIE C. & MINNIE L. WORLEY - 1978-79-80-81-82-83-84-85

JAMES PENNY - 1978

21 - ETHEL & SAM BONE - 1978-79-80-81-82-83-84-85

21 - ETHEL & SAM BONE - 1978-79-80-81-82-83-84-85

Scale - 1 inch = 300 Ft.

COUNTY

D.M.T.

County