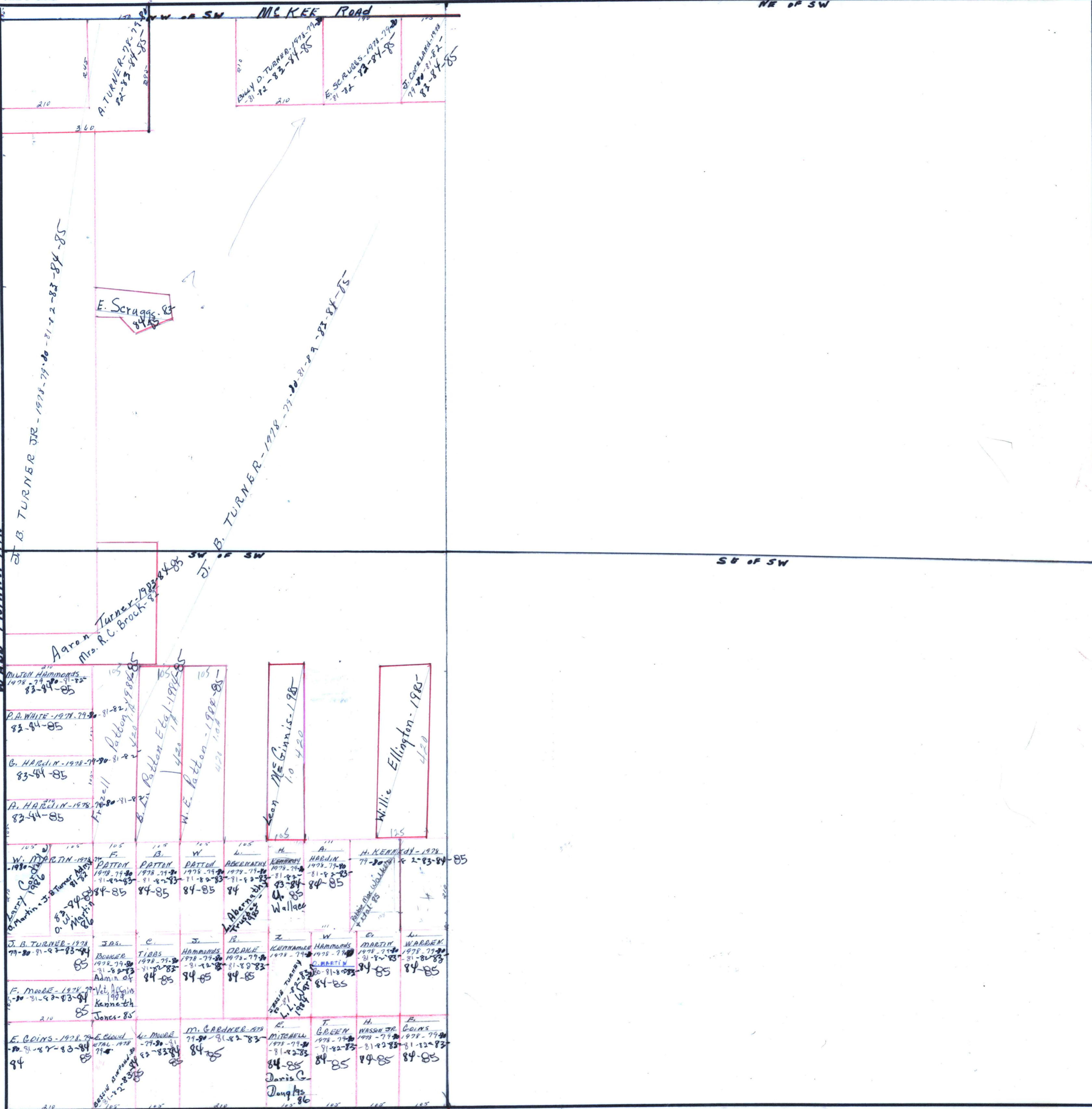


W¹/₂ OF SW¹/₄
TOWNSHIP 2

SECTION 9

RANGE 2W

Form 1—S.T.C. ROBERTS & SON—BIRMINGHAM



Scale—1 inch = 300.00 Ft.

COUNTY

Acc. To ALL INFORMATION AVAILABLE, THE WALL-TRIANA HWY IS ON THE SECTION LINE
 THE DIST. FROM SE COR. OF SW¹/₄ OF SW¹/₄ TO THE SW COR. OF SW¹/₄ OF SW¹/₄ IS ONLY
 16.25 CHS. AWD OF J.B. TURNER LAND IS E. OF HWY (Acc To Him)
 APRIL 1980