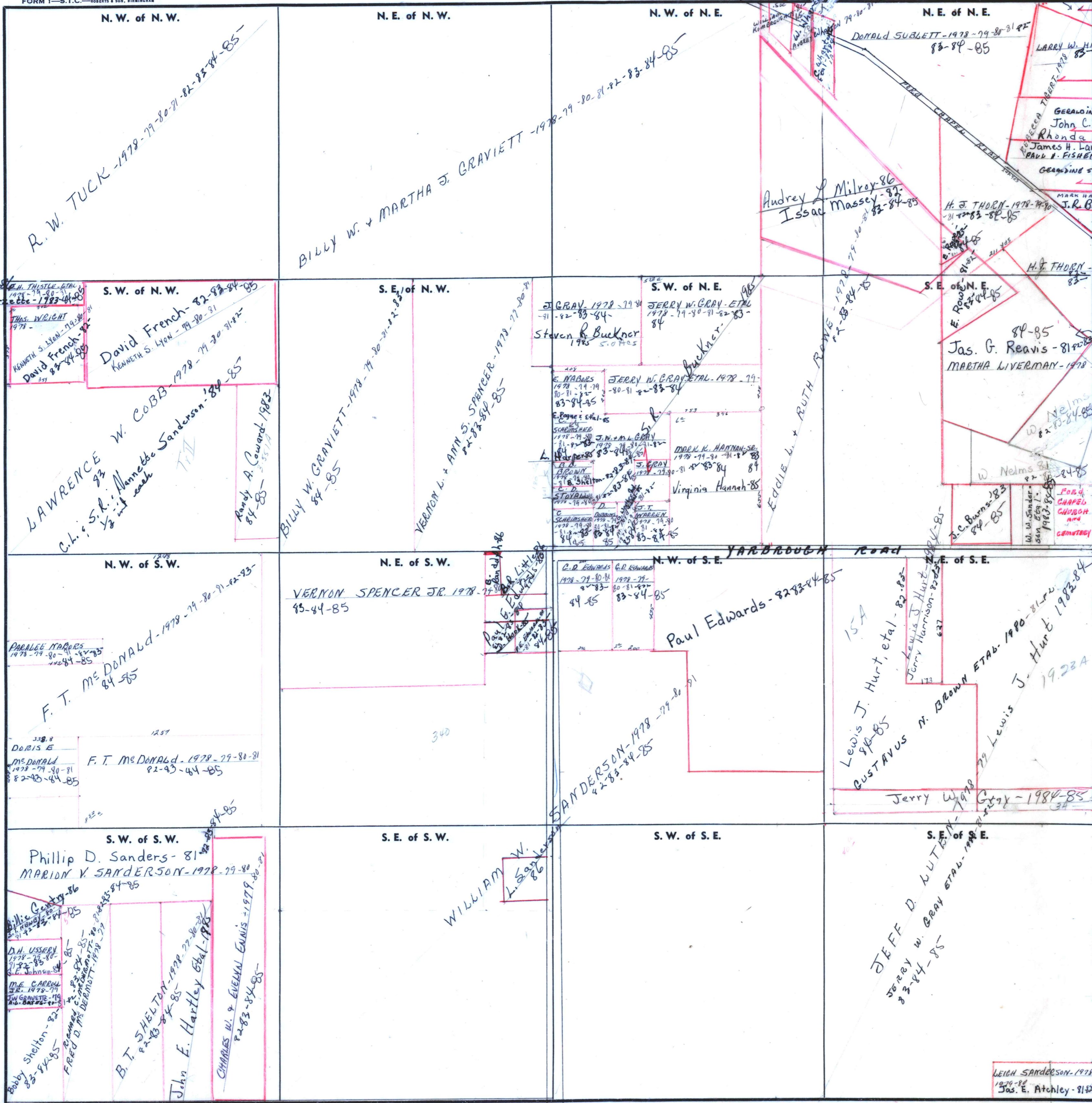


SECTION 28

TOWNSHIP 2

RANGE 2W

FORM 1—S.T.C.—ROBERTS & SON, BIRMINGHAM



COUNTY

Scale—1 inch—300 Ft.

Len Dempsey-81-82-83-84-85
CHESTER L. HENRY
1979-80

LARRY W. HARRISMAN-79-80-81-82-83-84-85
GERALDINE STANNETT
John C. Langford-81-82-83-84-85
Rhonda L. Brock-83-84-85
James H. Langford-81-82-83-84-85
PAUL H. FISHER-80-81
GERALDINE STANNETT-1979

MARK HANNAH
J.R. Bess-83-84-85

H. J. THORN-1978-79-80-81-82-83-84-85

Jas. G. Reavis-81-82-83-84-85
MARTHA LIVERMAN-1978-79-80-81-82-83-84-85

W. Neelms
J.C. Burns-83-84-85

FOR 4
CHAPEL
CHURCH
AND
CEMETERY

Paul Edwards-82-83-84-85

15A

Lewis J. Hurt, et al-82-83-84-85
Jerry Harrison-82-83-84-85

GUSTAVUS N. BROWN ETAL-1980-81-82-83-84-85
J. Hurt-1922A

Jerry W. Gray-1984-85

WILLIAM W. L. SANDERSON-86

JEFF D. KUTZ ETAL-83-84-85
JERRY W. GRAY ETAL-1984-85

LEIGH SANDERSON-1978-79-80-81-82-83-84-85
Jas. E. Atchley-81-82

Phillip Locke
Larry Barretts-1783-84-85

S.W. of N.W.
David French-82-83-84-85
KENNETH S. LYON-79-80-81-82-83-84-85

LAWRENCE W. COBB-1978-79-80-81-82-83-84-85
C.H. & S.R. Almette Sanderson-84-85
Randy A. Coward-1983-84-85

N.W. of S.W.
F. T. Mc DONALD-1978-79-80-81-82-83-84-85
DORIS E. Mc DONALD-1978-79-80-81-82-83-84-85

F. T. Mc DONALD-1978-79-80-81-82-83-84-85

S.W. of S.W.
Phillip D. Sanders-81-82-83-84-85
MARION V. SANDERSON-1978-79-80-81-82-83-84-85
B. T. SHELTON-1978-79-80-81-82-83-84-85
John F. Hartley et al-1983-84-85
CHARLES W. & EVELYN ENNIS-1979-80-81-82-83-84-85

S.E. of N.W.
BILLY W. GRAVIETT-1978-79-80-81-82-83-84-85
VERNON L. & ANN S. SPENCER-1978-79-80-81-82-83-84-85

N.E. of S.W.
VERNON SPENCER JR. 1978-79-80-81-82-83-84-85

S.E. of S.W.
WILLIAM W. L. SANDERSON-86

S.W. of N.E.
J. GRAY 1978-79-80-81-82-83-84-85
STEVEN R. BUCKNER-83-84-85
JERRY W. GRAY ETAL-1978-79-80-81-82-83-84-85
E. NABORS-1978-79-80-81-82-83-84-85
J.N. & M. GRAY-1978-79-80-81-82-83-84-85
MARK K. HANNAH SR.-1978-79-80-81-82-83-84-85
VIRGINIA HANNAH-85

N.W. of S.E.
G.D. EDWARDS-1978-79-80-81-82-83-84-85

S.W. of S.E.
WILLIAM W. L. SANDERSON-86