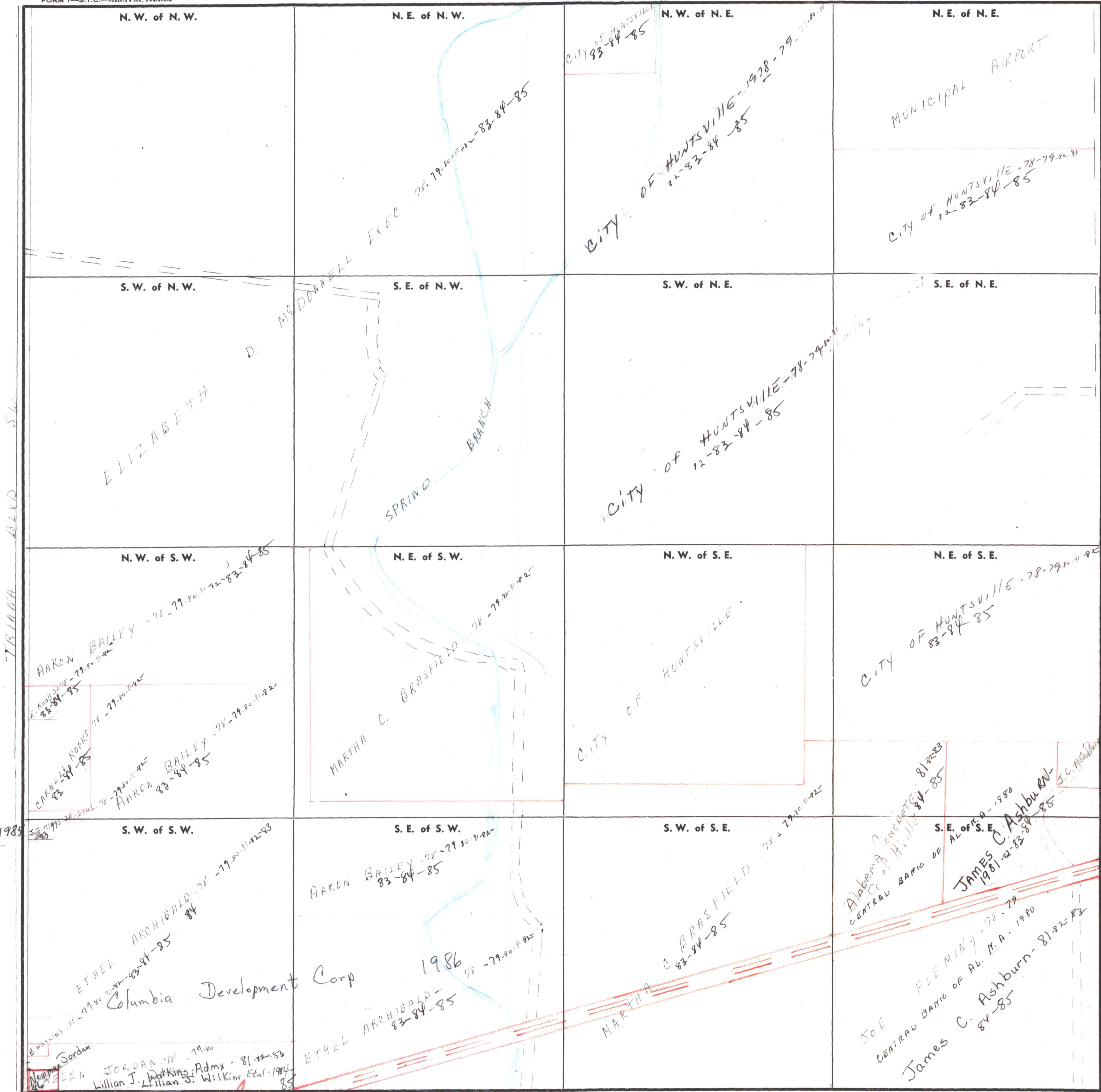


SECTION 23

TOWNSHIP 4

RANGE 1 W

FORM 1—S.T.C.—ROBERTS & SON, BIRMINGHAM



TRIANA BLVD SW

ELIZABETH

McDONNELL EXEC

SPRING BRANCH

CITY OF HUNTSVILLE 83-84-85

CITY OF HUNTSVILLE 1928-79

MUNICIPAL AIRPORT

CITY OF HUNTSVILLE 78-79-80-81

CITY OF HUNTSVILLE 78-79-80-81

CITY OF HUNTSVILLE 78-79-80-81

ARON BAILEY 78-79-80-81-82-83-84-85

MARTHA C. BRASFIELD 78-79-80-81-82

CITY OF HUNTSVILLE

CARROLL NOOKS 78-79-80-81-82

ARON BAILEY 78-79-80-81-82

Alabama Concrete 81-82-83

JAMES C. Ashburn 1981-82-83-84-85

ETHEL ARCHIBALD 78-79-80-81-82-83

ARON BAILEY 78-79-80-81-82

MARTHA C. BRASFIELD 78-79-80-81-82

Central Bank of AL 1980

JAMES C. Ashburn 78-79-80-81-82-83-84-85

NEWMAN SORDAN

JORDAN 78-79-80-81-82-83

ETHEL ARCHIBALD 78-79-80-81-82

Columbia Development Corp 1986

Scale—1 inch—300 Ft.

COUNTY