

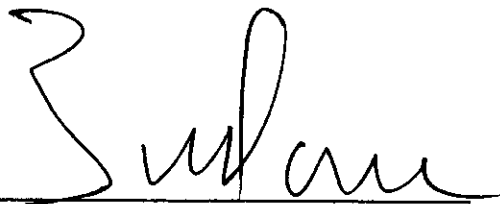
**ORDER: ACCEPT THE MERION SUBDIVISION PHASE 2 PRELIMINARY
SUBDIVISION PLAT**

Motion was made by Tim Gordon, duly seconded by John Morgan, to accept The Merion Subdivision Phase 2 Preliminary Subdivision Plat.

The vote on the motion was as follows:

Supervisor Brent Larson, voted yes
Supervisor John Morgan, voted yes
Supervisor Tim Gordon, voted yes
Supervisor Scott Allen, voted yes
Supervisor Greg Bynum, voted yes

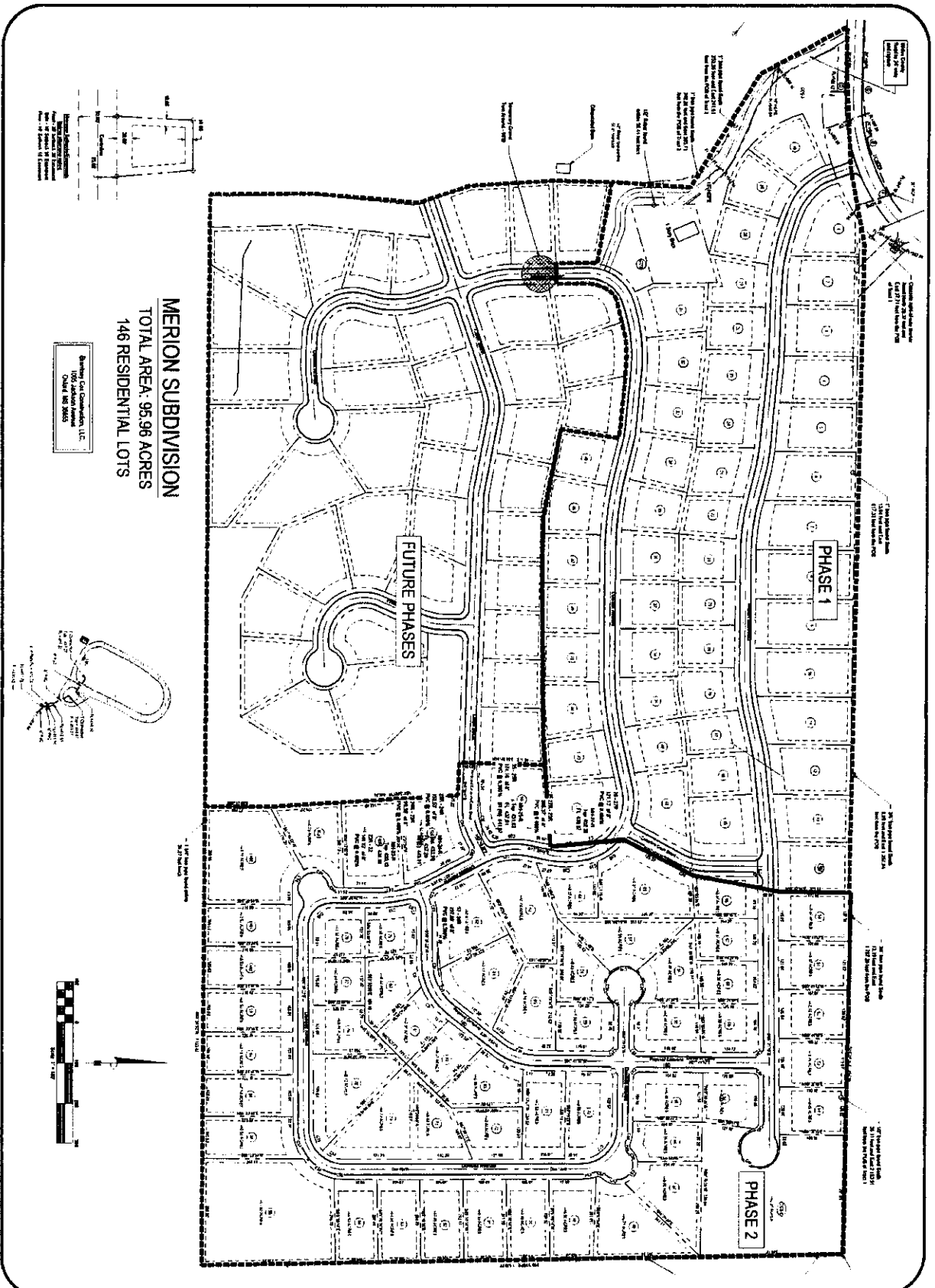
After the vote, President Larson, declared the motion carried, this the 3rd day of June, 2024.



**Brent Larson, President
Board of Supervisors**

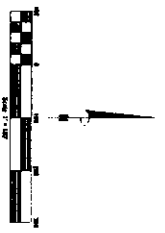
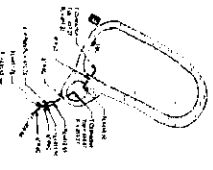


Mike Roberts, Chancery Clerk



MERION SUBDIVISION
 TOTAL AREA: 95.96 ACRES
 146 RESIDENTIAL LOTS

Shelving Co. Consultants, LLC
 1000 Jackson Avenue
 Oxford, MS 38855



Overall Layout

Project No.	2018-001
Client	Shelving Co. Consultants, LLC
Project Name	Merion Subdivision
Location	Oxford, MS
Scale	1" = 400'
Date	08/15/2018
Drawn By	J. Smith
Checked By	M. Jones
Approved By	[Signature]

REVISION	DATE

Contractor Plans For
 Merion Subdivision - Phase 2
 Located in the Northeast Quarter (NE 1/4) of
 Section 34 & the Northeast Quarter (NE 1/4) of
 Section 35, Township 8 South, Range 3 West,
 Lafayette County, Mississippi



WILLIAMS ENGINEERING CONSULTANTS, INC.
 Professional Engineers | Professional Land Surveyors

