

**ORDER: AUTHORIZE EXPANDING THE EXISTING CONDITIONAL USE PERMIT,
WINK TUMBLE ACADEMY, IN A RURAL (A-1) DISTRICT ON LAFAYETTE
COUNTY PARCEL 148-28-058.01**

Motion was made by John Morgan, duly seconded by Greg Bynum, to authorize expanding the existing Conditional Use Permit, Wink Tumble Academy, in a Rural (A-1) District on Lafayette County Parcel 148-28-058.01.

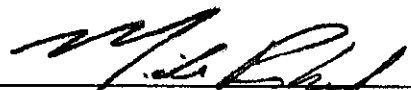
The vote on the motion was as follows:

Supervisor Brent Larson, voted yes
Supervisor John Morgan, voted yes
Supervisor Tim Gordon, voted yes
Supervisor Scott Allen, voted yes
Supervisor Greg Bynum, voted yes

After the vote, President Larson, declared the motion carried, this the 20th day of May, 2024.



**Brent Larson, President
Board of Supervisors**



Mike Roberts, Chancery Clerk

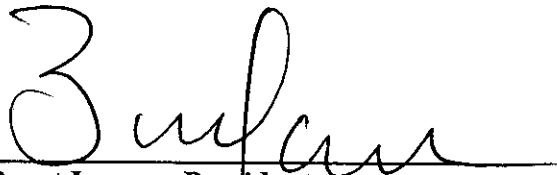
ORDER: AUTHORIZE THE WINK TRAMPOLINE PARK PRELIMINARY AND FINAL SITE PLAN CONTINGENT ON (1) NO CONSTRUCTION OR NEW BUILD UNTIL ACCESS ON CR 105 IS CONSTRUCTED (2) CERTIFICATE OF OCCUPANCY WITHHELD UNTIL HEALTH DEPARTMENT APPROVES SEPTIC SYSTEM

Motion was made by Greg Bynum, duly seconded by Tim Gordon, to authorize The Wink Trampoline Park Preliminary and Final Site Plan contingent on (1) No construction or new build until access on CR 105 is constructed (2) Certificate of occupancy withheld until Health Department approves septic system.

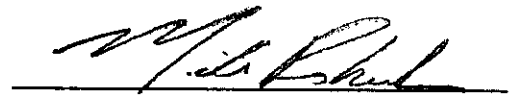
The vote on the motion was as follows:

Supervisor Brent Larson, voted yes
Supervisor John Morgan, voted yes
Supervisor Tim Gordon, voted yes
Supervisor Scott Allen, voted yes
Supervisor Greg Bynum, voted yes

After the vote, President Larson, declared the motion carried, this the 20th day of May, 2024.

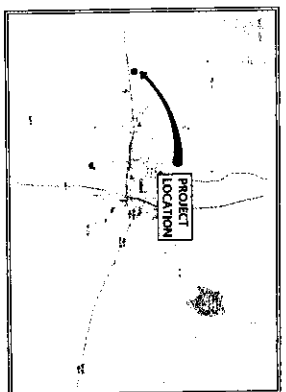


**Brent Larson, President
Board of Supervisors**



Mike Roberts, Chancery Clerk

WINK ACADEMY TRAMPOLINE PARK HIGHWAY 6 WEST LAFAYETTE COUNTY, MISSISSIPPI



VICINITY MAP

INDEX OF PLANS	
CONTRACT SHEET	C-000
SITE MAPS	C-001
EXISTING CONDITIONS	C-200
LANDSCAPE PLAN	C-300
UTILITY PLAN	C-400
STORM DRAINAGE PLAN	C-500
EROSION CONTROL PLAN	C-600
WATER DETAILS	C-801
SAWTOOTH FENCE DETAILS	C-802
STORM DRAINAGE DETAILS	C-803
EROSION CONTROL DETAILS	C-804
BUILDING ELEVATIONS	A-1

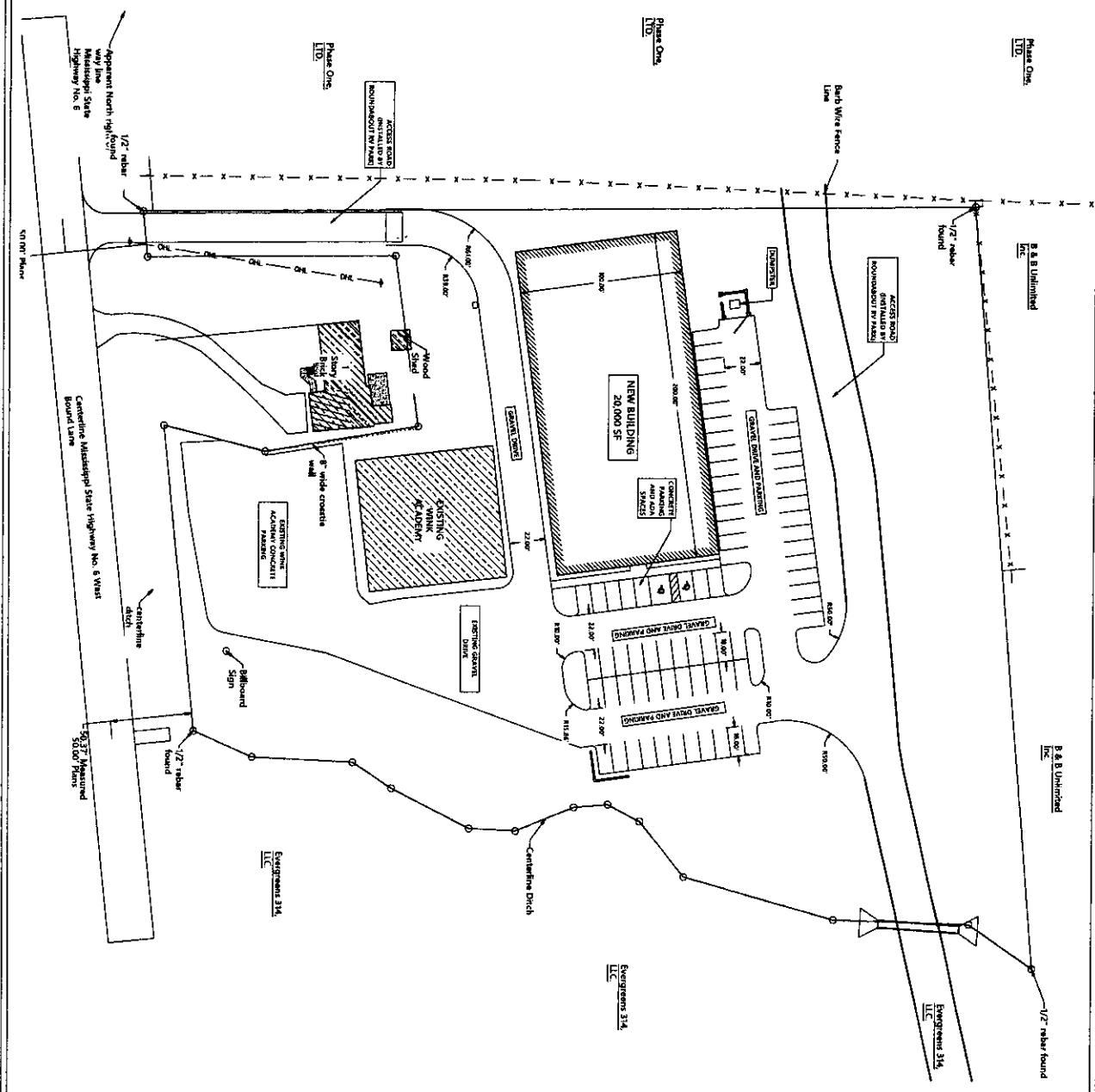


JM ENGINEERING
AND DESIGN, LLC
6090A 9th
Lafayette, MS 39303

WINK ACADEMY- ADDITION LAFAYETTE COUNTY, MISSISSIPPI

DRAWN BY	JM
CHECKED BY	JM
PROJECT NO.	XXXX
DATE	02/27/2024
SCALE	
REVISION	

C-000

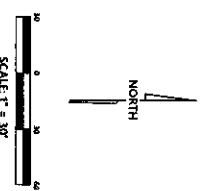


SITE DATA TABLE

PROPERTY AREA: 4.14 AC
 ZONING: A-1 RURAL
 BUILDING INFORMATION:
 20,000 SF
 PARKING PROVIDED: 71 SPACES (INCLUDING 2 ADA SPACES)

LEGEND

---	PROPERTY LINE
---	ADJACENT PROPERTY LINE
---	BUILDING SETBACK LINE
---	EX WATER LINE
---	EX SEWER LINE
---	EX STORM DRAIN
---	EX TRAILS
---	PROPOSED WATER LINE
---	PROPOSED SEWER LINE
---	PROPOSED STORM DRAIN
---	PROPOSED WATER METER
---	PROPOSED SEWER MANHOLE




C-100

SITE PLAN

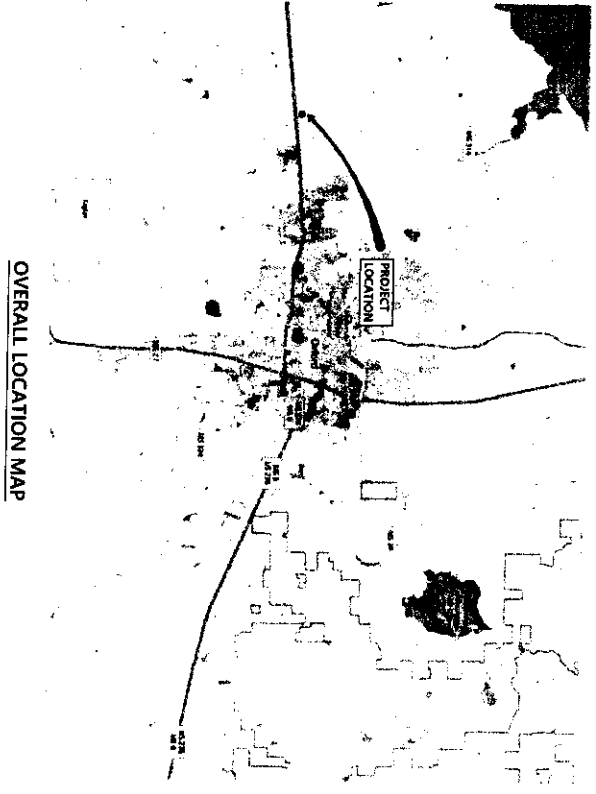
WINK ACADEMY- ADDITION

LAFAYETTE COUNTY, MISSISSIPPI

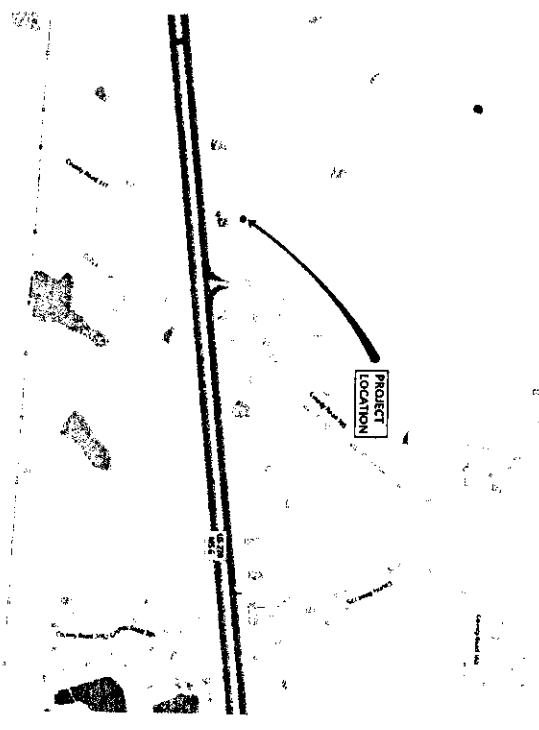


**JM ENGINEERING
AND DESIGN, LLC**
 DRYDEN, MS
 (662) 801-4903

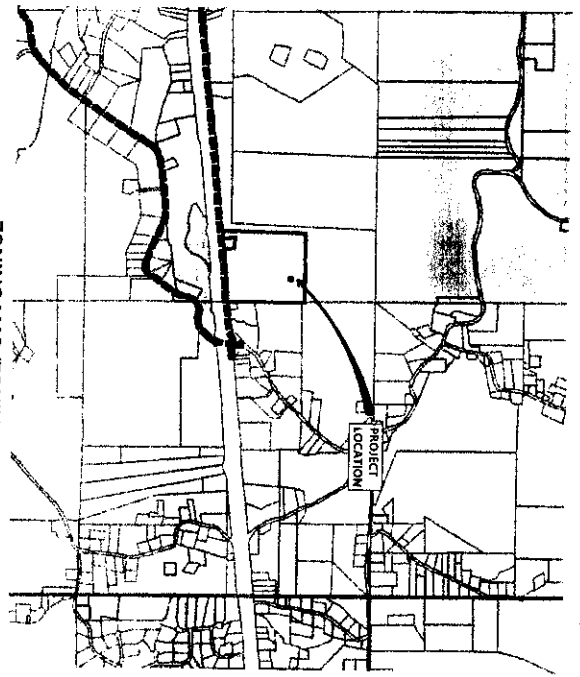
DRAWN BY	JM
CHECKED BY	JM
PROJECT NO.	2008
DATE	02/12/08
SCALE	1" = 30'
REVISION	



OVERALL LOCATION MAP



LOCATION MAP



ZONING MAP (ZONING: A-1)



AERIAL MAP

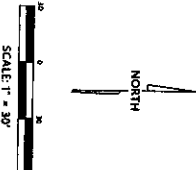
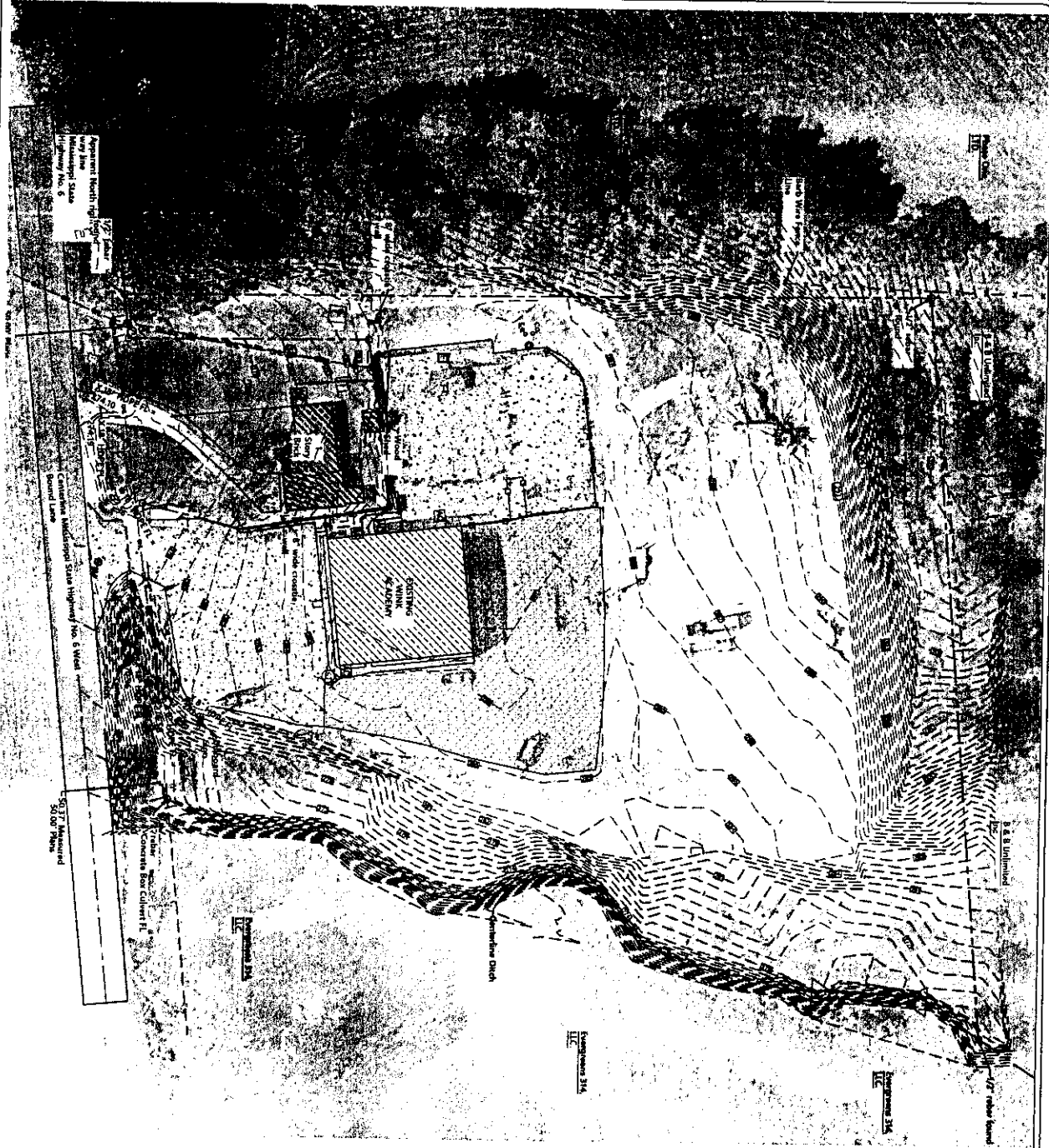


JN ENGINEERING
AND DESIGN, LLC
Oxford, MS
(662) 901-8881

SITE MAPS
WINK ACADEMY- ADDITION
LAFAYETTE COUNTY, MISSISSIPPI

DRAWN BY	JMA
CHECKED BY	JMA
PROJECT NO.	XXXX
DATE	02/17/2024
SCALE	
REVISION	

C-101



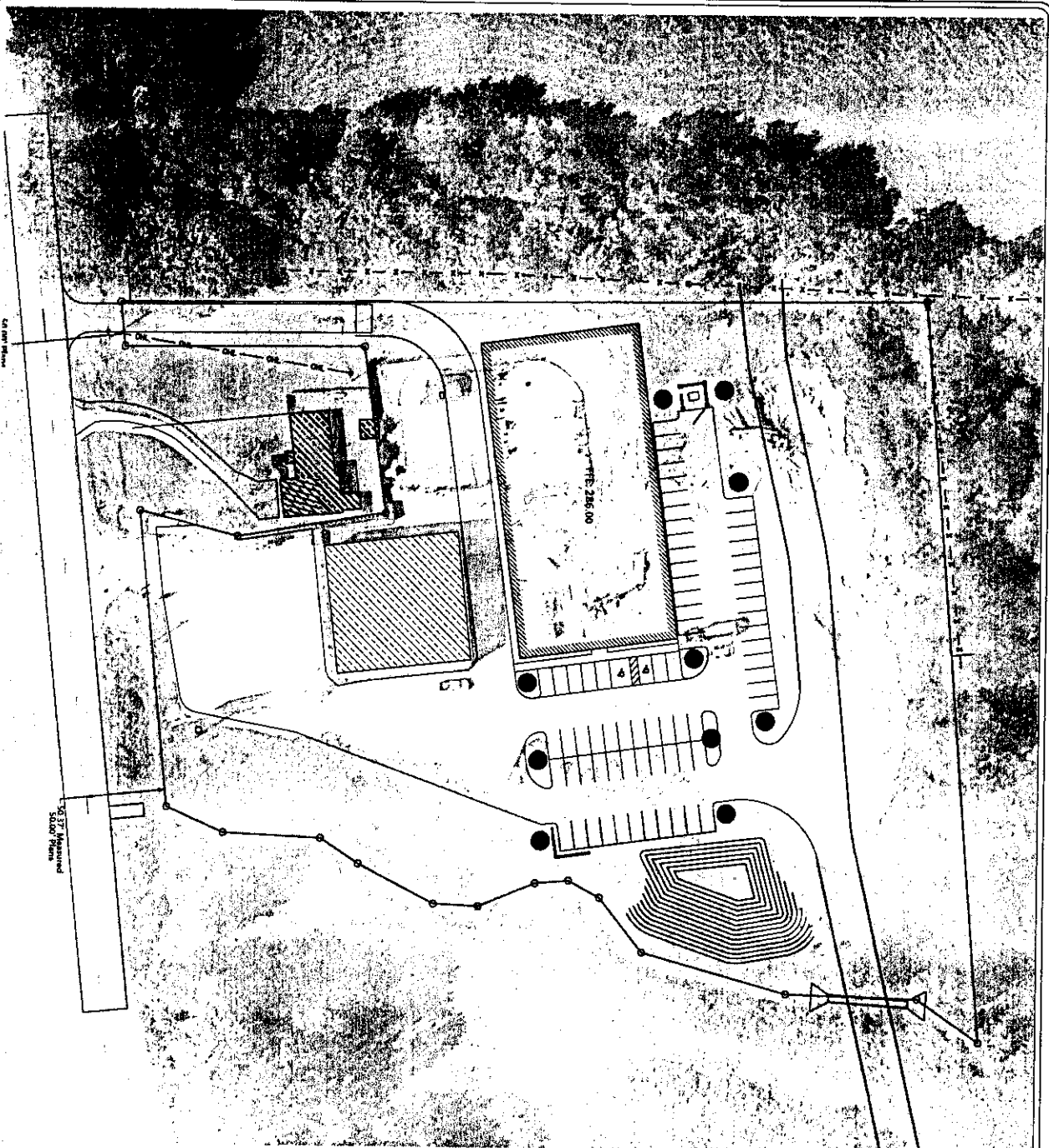
C-200

EXISTING CONDITIONS
WINK ACADEMY- ADDITION
 LAFAYETTE COUNTY, MISSISSIPPI

JM ENGINEERING
 AND DESIGN, LLC
 OXFORD, MS
 (601) 907-4803



DRAWN BY	JJM
CHECKED BY	JJM
PROJECT NO	2000
DATE	02/12/2014
SCALE	1" = 20'
REVISION	



LEGEND

● 2" OAK OR EQUIVALENT

NORTH

SCALE 1" = 30'

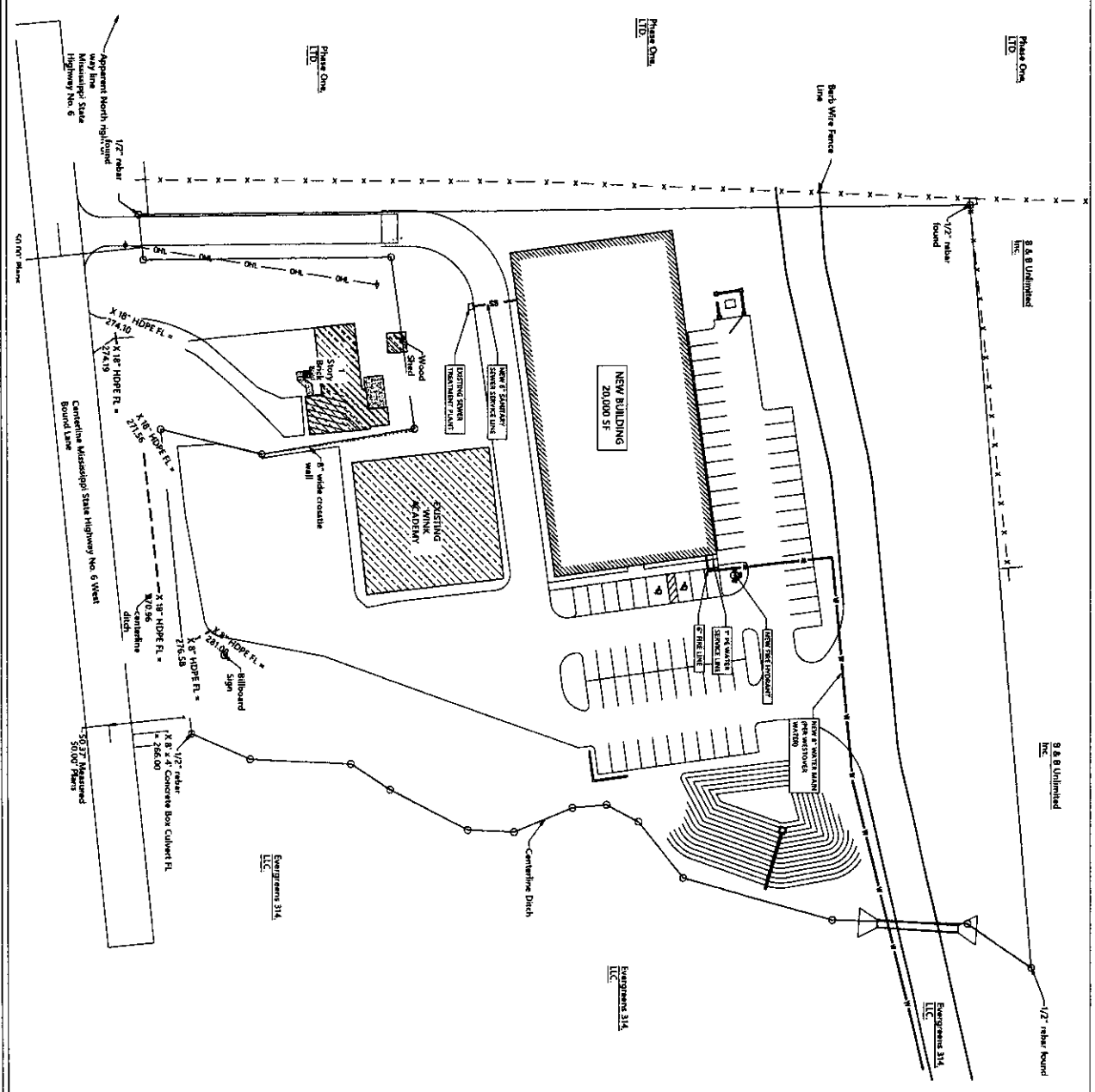
LANDSCAPE PLAN
WINK ACADEMY- ADDITION
 LAFAYETTE COUNTY, MISSISSIPPI

**JM ENGINEERING
 AND DESIGN, LLC**
 OXFORD, MS
 (662) 937-8833



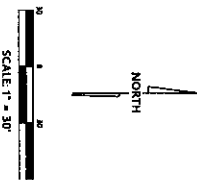
C-300

DRAWN BY	JM
CHECKED BY	JM
PROJECT NO.	JM
DATE	02/12/04
SCALE	1" = 30'
REVISION	



LEGEND

	PROPERTY LINE
	ADJACENT PROPERTY LINE
	MAINLINE SEWER LINE
	PROPOSED STORM DRAIN
	PROPOSED STORM LINE
	PROPOSED STORM MANHOLE
	PROPOSED SEWER MANHOLE



UTILITY PLAN

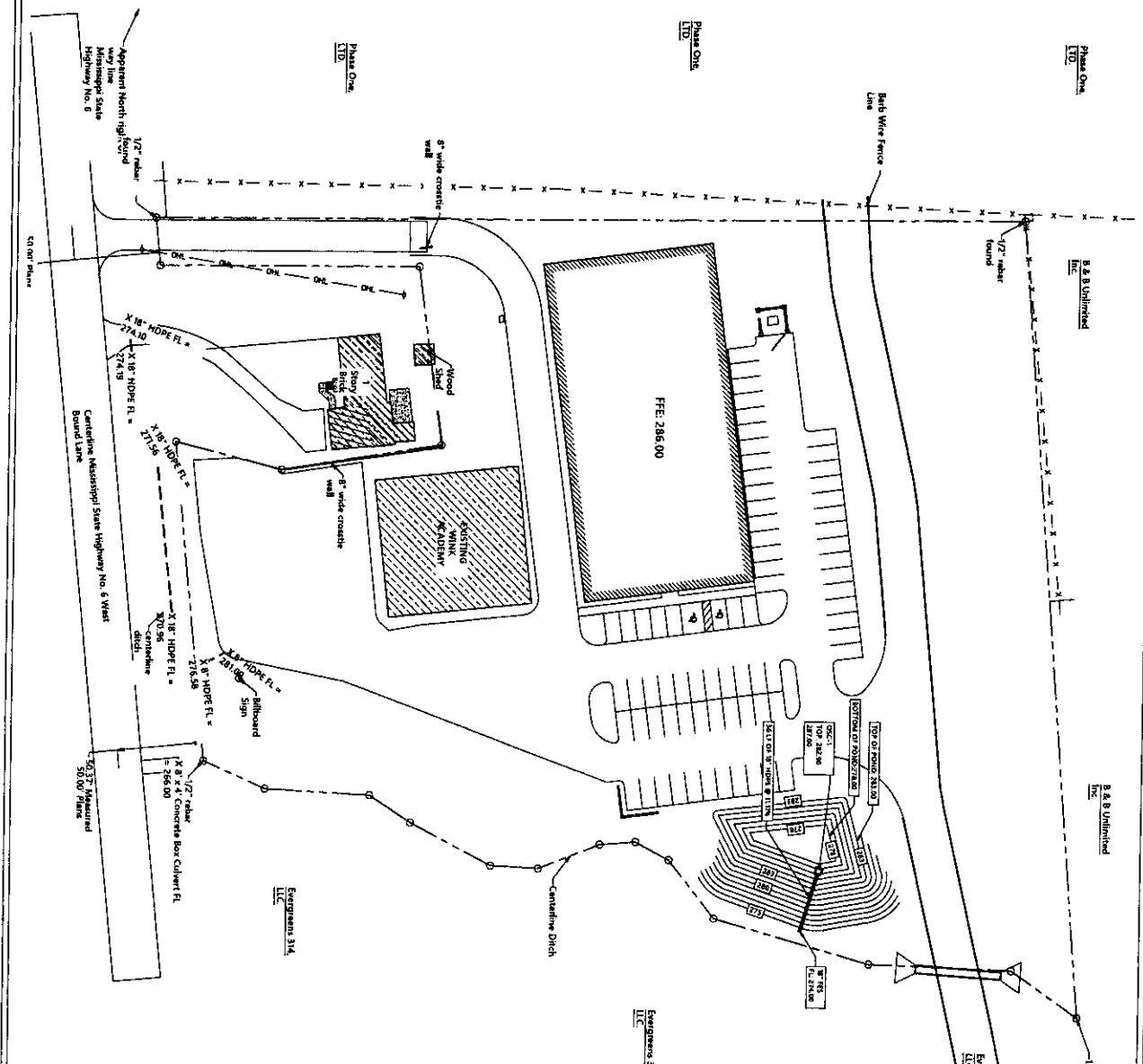
WINK ACADEMY- ADDITION

LAFAYETTE COUNTY, MISSISSIPPI

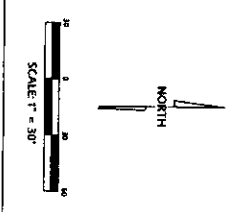
JM ENGINEERING AND DESIGN, LLC
 6020 W. 10th St.
 OKLAHOMA CITY, OK 73127


C-500

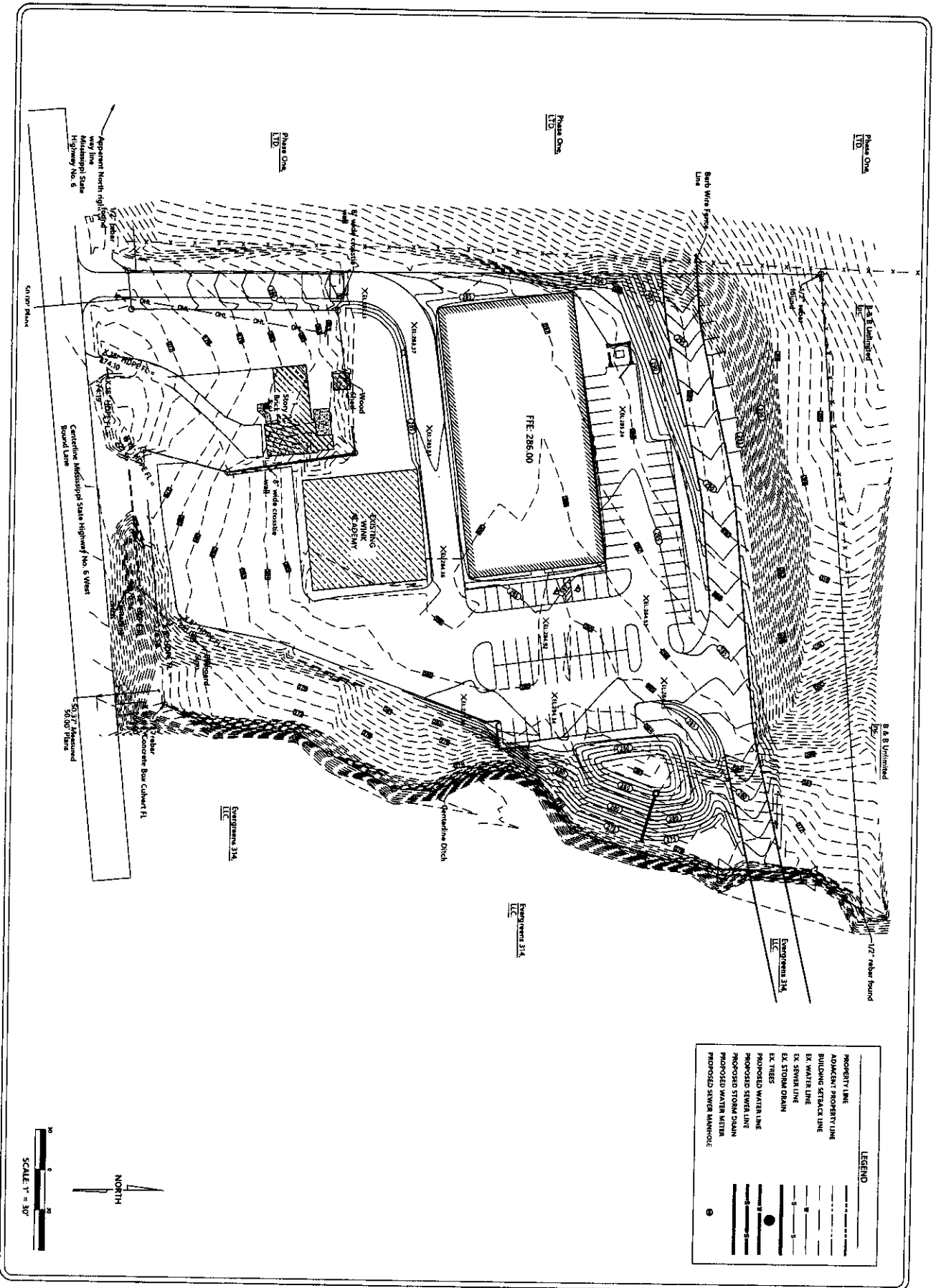
DRAWN BY	JM
CHECKED BY	JM
PROJECT NO.	XXXX
DATE	02/17/2014
SCALE	1" = 10'
REVISION	



- STORMWATER NOTES**
1. ALL CONSTRUCTION METHODS AND MATERIALS USED IN THE STORM WATER SYSTEM MUST COMPLY IN ALL RESPECTS TO THE LAFAYETTE COUNTY SPECIFICATIONS AND REQUIREMENTS. IF A DISCREPANCY BETWEEN THE LAFAYETTE COUNTY SPECIFICATIONS AND ANY CONSTRUCTION PANS, THE CITY OF OXFORD SPECIFICATIONS GOVERN AND THE CITY OF OXFORD.
 2. ALL CONSTRUCTION SHALL BE IN ACCORDANCE WITH DRAWINGS NOT BE APPROVED BY ENGINEER AND THE CITY OF OXFORD.
 3. ALL INLETS IN CITY ROW SHALL BE MOUNT SS-2 WITH CAST-IN-PLACE TOPS AND ACCESSIBLE TO ALL VEHICLES.
 4. DISCONNECT BASINS IN CITY ROW SHALL BE CAST-IN-PLACE CONCRETE INLETS OR PRECAST CONCRETE INLETS.
 5. PRECAST INLETS SHALL BE INTERLOCK BASKETS ON APPROVED EQUAL SEE MANUFACTURERS FOR DETAILS.
 6. NO DRAINS WILL BE INSTALLED IN TRUCK DOCK AREAS. CONTRACTOR SHALL INSTALL FIRE PROTECTIVE CURBS AND MARK FOR FUTURE CONNECTION. THIS WILL BE THE CONTRACTOR'S RESPONSIBILITY.
 7. ALL PIPES SHALL HAVE A CLEAN OUT AT TERMINI FOR ACCESS AND MAINTENANCE.
 8. ALL STORM DRAIN AND SEWER SHALL BE INSPECTED BY CAMERA AND IN THE PRESENCE OF A REPRESENTATIVE OF THE CITY OF OXFORD. REPAIRS SHALL BE REMOVED AND REPAIRED AND OR REBUILT IN ACCORDANCE TO DRAWINGS SHALL BE REMOVED AND REPAIRED AND OR REBUILT IN ACCORDANCE TO DRAWINGS IN THE PRESENCE OF THE CITY OF OXFORD. ALL REPAIRS SHALL BE MADE PRIOR TO CITY ACCEPTANCE.

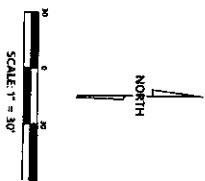


 <p>JIM ENGINEERING AND DESIGN, LLC OXFORD, MS (662) 911-4443</p>	<p>STORM DRAINAGE PLAN</p> <p>WINK ACADEMY- ADDITION</p> <p>LAFAYETTE COUNTY, MISSISSIPPI</p>	<p>C-501</p>												
<table border="1" style="width: 100%; border-collapse: collapse;"> <tr><td style="width: 50%;">DRAWN BY</td><td>JIM</td></tr> <tr><td>CHECKED BY</td><td>JIM</td></tr> <tr><td>PROJECT NO.</td><td>EXX</td></tr> <tr><td>DATE</td><td>02/12/2024</td></tr> <tr><td>SCALE</td><td>1" = 30'</td></tr> <tr><td>REVISION</td><td></td></tr> </table>	DRAWN BY	JIM	CHECKED BY	JIM	PROJECT NO.	EXX	DATE	02/12/2024	SCALE	1" = 30'	REVISION			
DRAWN BY	JIM													
CHECKED BY	JIM													
PROJECT NO.	EXX													
DATE	02/12/2024													
SCALE	1" = 30'													
REVISION														



LEGEND

PROPERTY LINE	---
ADJACENT PROPERTY LINE	---
BUILDING FOOTPRINT LINE	---
EX. WATER LINE	---
EX. SEWER LINE	---
EX. STORM DRAIN	---
EX. TREES	○
PROPOSED WATER LINE	---
PROPOSED SEWER LINE	---
PROPOSED STORM DRAIN	---
PROPOSED WATER METER	○
PROPOSED SEWER MANHOLE	○




GRADING PLAN

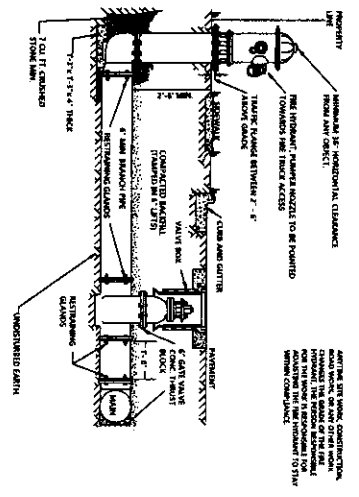
WINK ACADEMY- ADDITION
LAFAYETTE COUNTY, MISSISSIPPI

DRAWN BY	JRM
CHECKED BY	JRM
PROJECT NO.	X000
DATE	02/12/2024
SCALE	1" = 30'
REVISION	

C-600

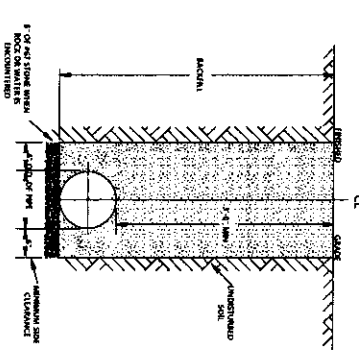


JM ENGINEERING AND DESIGN, LLC
OXYMOR, MS
(601) 379-0363



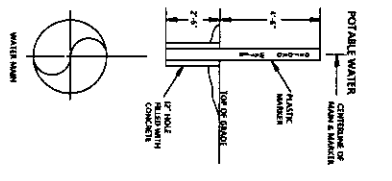
NOTES:
 1. THE SERVICE LINE SHALL BE INSTALLED IN ACCORDANCE WITH THE MISSISSIPPI PLUMBING CODE.
 2. THE SERVICE LINE SHALL BE INSTALLED IN ACCORDANCE WITH THE MISSISSIPPI PLUMBING CODE.
 3. THE SERVICE LINE SHALL BE INSTALLED IN ACCORDANCE WITH THE MISSISSIPPI PLUMBING CODE.
 4. THE SERVICE LINE SHALL BE INSTALLED IN ACCORDANCE WITH THE MISSISSIPPI PLUMBING CODE.
 5. THE SERVICE LINE SHALL BE INSTALLED IN ACCORDANCE WITH THE MISSISSIPPI PLUMBING CODE.

FIRE PROTECTION INSTALLATION DETAIL



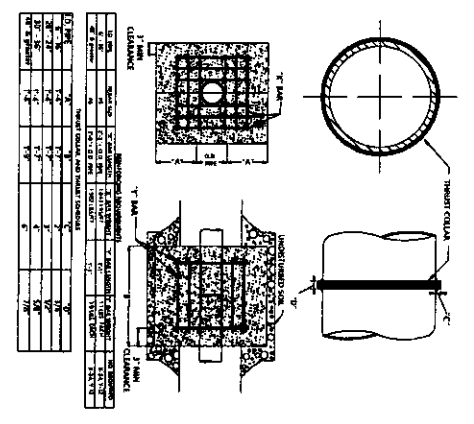
NOTES:
 1. THE SERVICE LINE SHALL BE INSTALLED IN ACCORDANCE WITH THE MISSISSIPPI PLUMBING CODE.
 2. THE SERVICE LINE SHALL BE INSTALLED IN ACCORDANCE WITH THE MISSISSIPPI PLUMBING CODE.
 3. THE SERVICE LINE SHALL BE INSTALLED IN ACCORDANCE WITH THE MISSISSIPPI PLUMBING CODE.
 4. THE SERVICE LINE SHALL BE INSTALLED IN ACCORDANCE WITH THE MISSISSIPPI PLUMBING CODE.
 5. THE SERVICE LINE SHALL BE INSTALLED IN ACCORDANCE WITH THE MISSISSIPPI PLUMBING CODE.

FRENCH REQUIREMENTS FOR MAIN



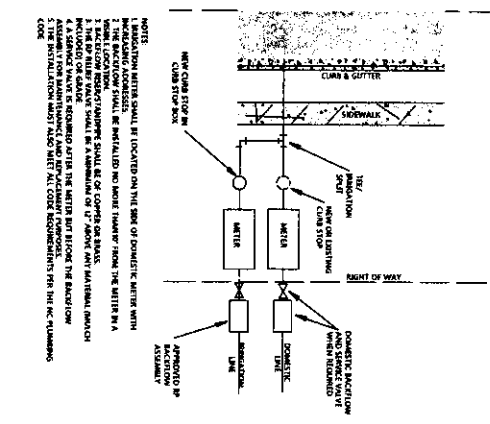
NOTES:
 1. PORTABLE WATER MAINS TO BE MADE IN CONJUNCTION WITH THE MAINS TO BE INSTALLED IN ACCORDANCE WITH THE MISSISSIPPI PLUMBING CODE.
 2. PORTABLE WATER MAINS TO BE MADE IN CONJUNCTION WITH THE MAINS TO BE INSTALLED IN ACCORDANCE WITH THE MISSISSIPPI PLUMBING CODE.
 3. PORTABLE WATER MAINS TO BE MADE IN CONJUNCTION WITH THE MAINS TO BE INSTALLED IN ACCORDANCE WITH THE MISSISSIPPI PLUMBING CODE.
 4. PORTABLE WATER MAINS TO BE MADE IN CONJUNCTION WITH THE MAINS TO BE INSTALLED IN ACCORDANCE WITH THE MISSISSIPPI PLUMBING CODE.
 5. PORTABLE WATER MAINS TO BE MADE IN CONJUNCTION WITH THE MAINS TO BE INSTALLED IN ACCORDANCE WITH THE MISSISSIPPI PLUMBING CODE.

FRENCH REQUIREMENTS FOR MAIN



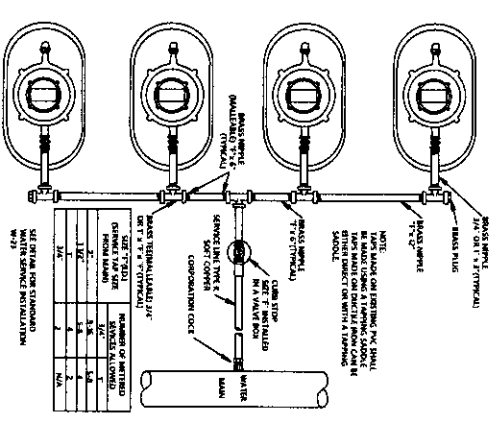
ITEM	DESCRIPTION	QUANTITY	UNIT	PRICE	TOTAL
1	TRENCH BOX	1	EA	100.00	100.00
2	TRENCH BOX	1	EA	100.00	100.00
3	TRENCH BOX	1	EA	100.00	100.00
4	TRENCH BOX	1	EA	100.00	100.00
5	TRENCH BOX	1	EA	100.00	100.00
6	TRENCH BOX	1	EA	100.00	100.00
7	TRENCH BOX	1	EA	100.00	100.00
8	TRENCH BOX	1	EA	100.00	100.00
9	TRENCH BOX	1	EA	100.00	100.00
10	TRENCH BOX	1	EA	100.00	100.00

TRENCH BOX FOR MAIN



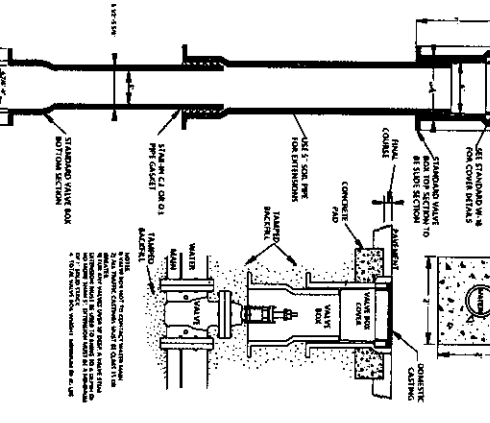
NOTES:
 1. THE SERVICE LINE SHALL BE INSTALLED IN ACCORDANCE WITH THE MISSISSIPPI PLUMBING CODE.
 2. THE SERVICE LINE SHALL BE INSTALLED IN ACCORDANCE WITH THE MISSISSIPPI PLUMBING CODE.
 3. THE SERVICE LINE SHALL BE INSTALLED IN ACCORDANCE WITH THE MISSISSIPPI PLUMBING CODE.
 4. THE SERVICE LINE SHALL BE INSTALLED IN ACCORDANCE WITH THE MISSISSIPPI PLUMBING CODE.
 5. THE SERVICE LINE SHALL BE INSTALLED IN ACCORDANCE WITH THE MISSISSIPPI PLUMBING CODE.

REVISIONS TO WATER MAINS



NO.	DESCRIPTION	DATE	BY
1	AS SHOWN	1/1/20	JM
2	AS SHOWN	1/1/20	JM
3	AS SHOWN	1/1/20	JM
4	AS SHOWN	1/1/20	JM
5	AS SHOWN	1/1/20	JM
6	AS SHOWN	1/1/20	JM
7	AS SHOWN	1/1/20	JM
8	AS SHOWN	1/1/20	JM
9	AS SHOWN	1/1/20	JM
10	AS SHOWN	1/1/20	JM

STANDARD GAS VALVE ASSEMBLY



NOTES:
 1. THE GAS VALVE SHALL BE INSTALLED IN ACCORDANCE WITH THE MISSISSIPPI PLUMBING CODE.
 2. THE GAS VALVE SHALL BE INSTALLED IN ACCORDANCE WITH THE MISSISSIPPI PLUMBING CODE.
 3. THE GAS VALVE SHALL BE INSTALLED IN ACCORDANCE WITH THE MISSISSIPPI PLUMBING CODE.
 4. THE GAS VALVE SHALL BE INSTALLED IN ACCORDANCE WITH THE MISSISSIPPI PLUMBING CODE.
 5. THE GAS VALVE SHALL BE INSTALLED IN ACCORDANCE WITH THE MISSISSIPPI PLUMBING CODE.

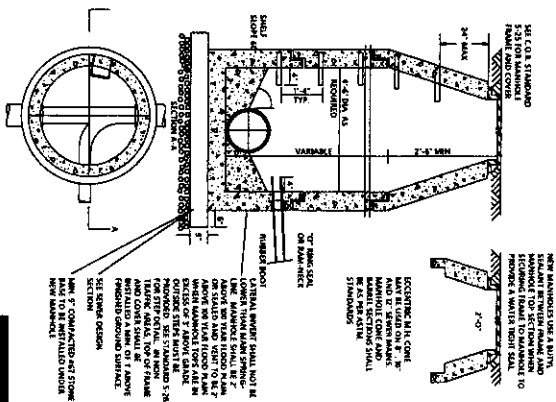
WATER SERVICE LINE

DRAWN BY	JM
CHECKED BY	JM
PROJECT NO.	XXXX
DATE	02/27/2014
SCALE	
REVISION	

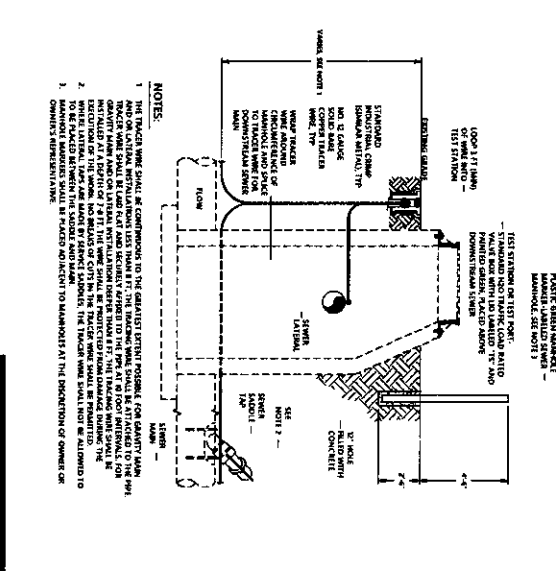
WATER DETAILS
WINK ACADEMY- ADDITION
LAFAYETTE COUNTY, MISSISSIPPI

JM ENGINEERING AND DESIGN, LLC
 OXFORD, MS
 (601) 907-4433

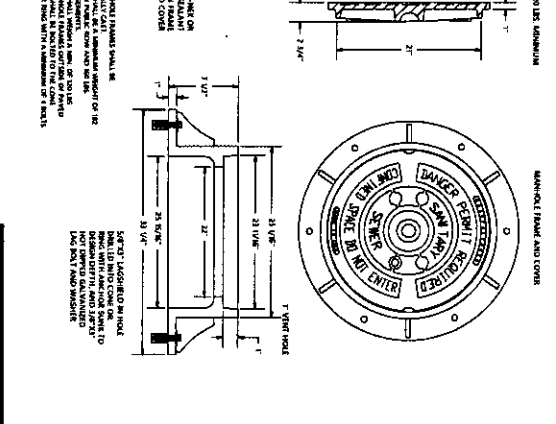
C-801



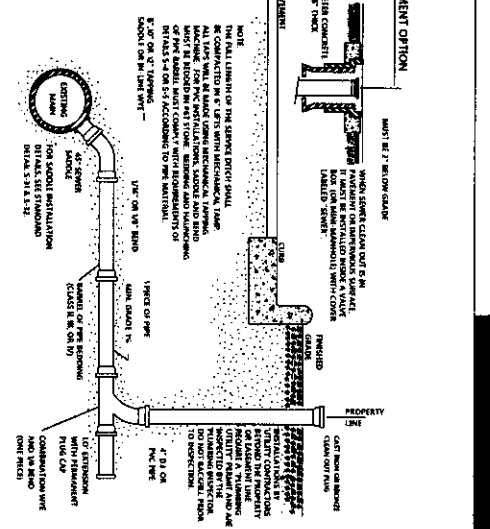
MANHOLE INSTALLATION SHALL BE IN ACCORDANCE WITH THE FOLLOWING NOTES:
 1. THE MANHOLE SHALL BE CONSTRUCTED TO THE FINISHED GRADE OF THE SURFACE.
 2. THE MANHOLE SHALL BE CONSTRUCTED TO THE FINISHED GRADE OF THE SURFACE.
 3. THE MANHOLE SHALL BE CONSTRUCTED TO THE FINISHED GRADE OF THE SURFACE.



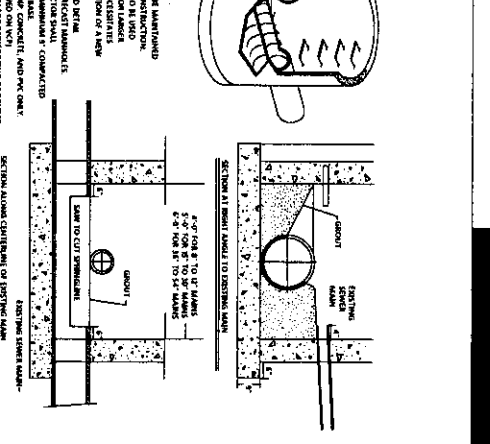
GRAVITY SEWER MAIN TRACER PIPE SHALL BE CONSTRUCTED TO THE FINISHED GRADE OF THE SURFACE.
 1. THE TRACER PIPE SHALL BE CONSTRUCTED TO THE FINISHED GRADE OF THE SURFACE.
 2. THE TRACER PIPE SHALL BE CONSTRUCTED TO THE FINISHED GRADE OF THE SURFACE.



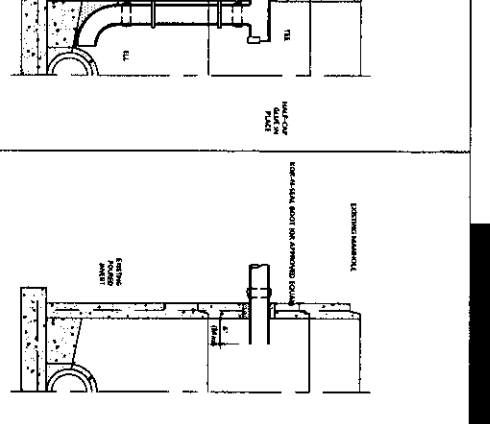
STANDARD MANHOLE COVER SHALL BE CONSTRUCTED TO THE FINISHED GRADE OF THE SURFACE.
 1. THE STANDARD MANHOLE COVER SHALL BE CONSTRUCTED TO THE FINISHED GRADE OF THE SURFACE.
 2. THE STANDARD MANHOLE COVER SHALL BE CONSTRUCTED TO THE FINISHED GRADE OF THE SURFACE.



PAVEMENT OPTION SHALL BE CONSTRUCTED TO THE FINISHED GRADE OF THE SURFACE.
 1. THE PAVEMENT OPTION SHALL BE CONSTRUCTED TO THE FINISHED GRADE OF THE SURFACE.
 2. THE PAVEMENT OPTION SHALL BE CONSTRUCTED TO THE FINISHED GRADE OF THE SURFACE.



MANHOLE INSTALLATION OVER EXISTING SEWER MAIN SHALL BE CONSTRUCTED TO THE FINISHED GRADE OF THE SURFACE.
 1. THE MANHOLE INSTALLATION OVER EXISTING SEWER MAIN SHALL BE CONSTRUCTED TO THE FINISHED GRADE OF THE SURFACE.
 2. THE MANHOLE INSTALLATION OVER EXISTING SEWER MAIN SHALL BE CONSTRUCTED TO THE FINISHED GRADE OF THE SURFACE.



MANHOLE INSTALLATION OVER EXISTING DROP MANHOLE SHALL BE CONSTRUCTED TO THE FINISHED GRADE OF THE SURFACE.
 1. THE MANHOLE INSTALLATION OVER EXISTING DROP MANHOLE SHALL BE CONSTRUCTED TO THE FINISHED GRADE OF THE SURFACE.
 2. THE MANHOLE INSTALLATION OVER EXISTING DROP MANHOLE SHALL BE CONSTRUCTED TO THE FINISHED GRADE OF THE SURFACE.

TYPICAL LATEST 1/2" = 1' PLAN

MANHOLE INSTALLATION OVER EXISTING SEWER MAIN - 1/2" = 1' PLAN

TYPICAL 1/2" = 1' DRAIN DROP

NEW SEWER INSTALLATION MANHOLE

C-802

DESIGNED BY	JM
CHECKED BY	JM
PROJECT NO.	2023/001
DATE	02/12/2024
REVISION	

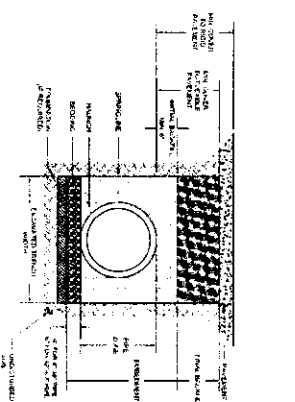
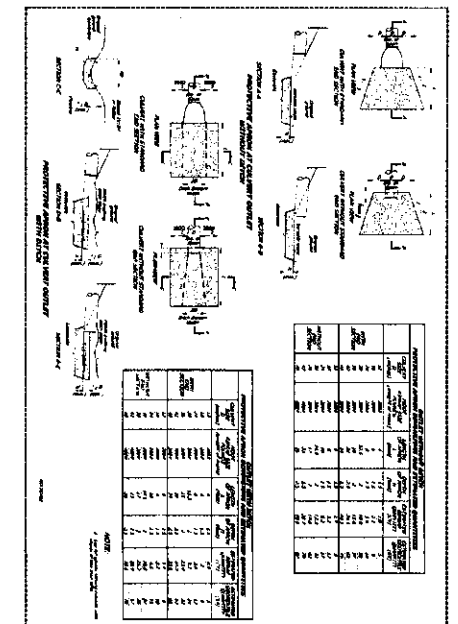
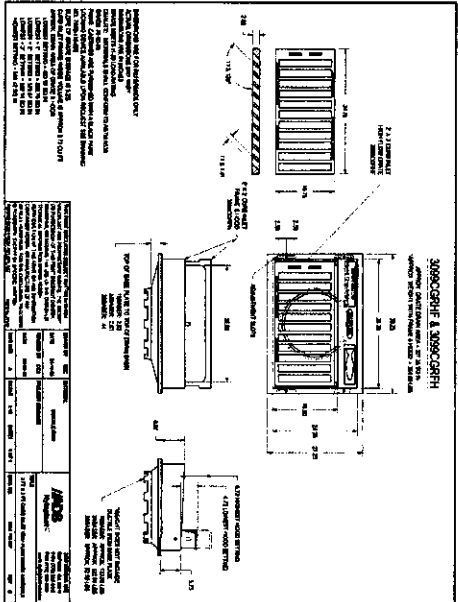
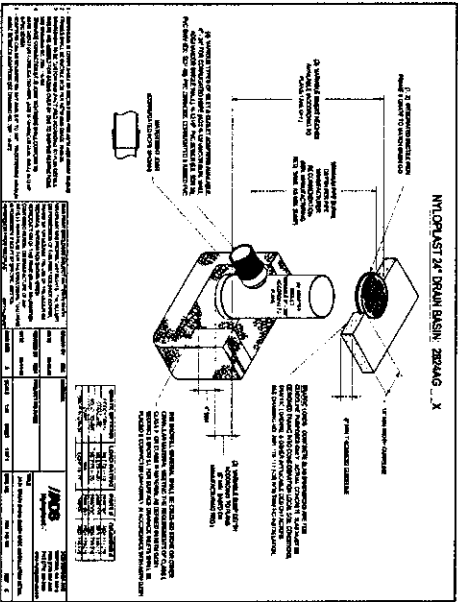
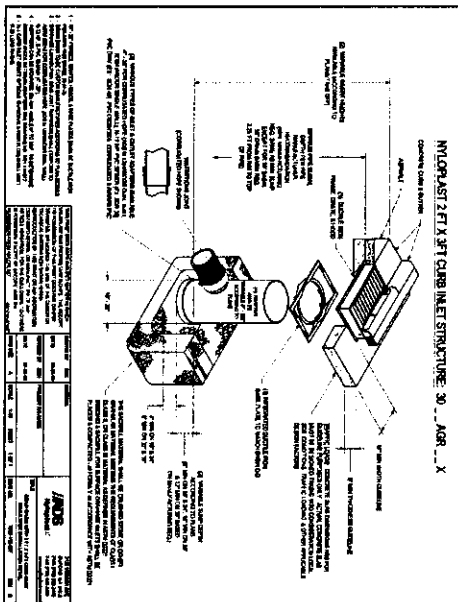
SEWER DETAILS

WINK ACADEMY - ADDITION

LAFAYETTE COUNTY, MISSISSIPPI



JM ENGINEERING AND DESIGN, LLC
 6620 9TH AVE S
 DORADO, MS 39055



CURB DETAIL

SURFACE INLET DETAIL

CURB DETAIL

RIP AREA DETAIL

STORM DRAIN TRENCH AT GRADE DETAILS

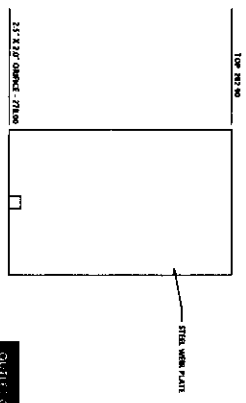
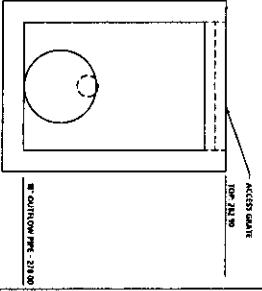
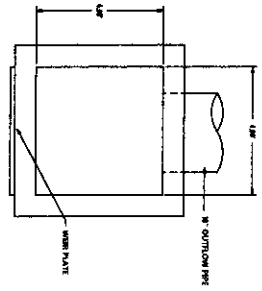


JM ENGINEERING AND DESIGN, LLC
 DRYDEN, MS
 (601) 871-7810

STORM DRAINAGE DETAILS
 WINK ACADEMY- ADDITION
 LAFAYETTE COUNTY, MISSISSIPPI

DRAWN BY	JM
CHECKED BY	JM
PROJECT NO.	3100
DATE	02/27/2024
SCALE	
REVISION	

C-803



OUTLET CONTROL STRUCTURE (CS)
E-1021-11

OUTLET CONTROL STRUCTURE DETAILS
WINK ACADEMY- ADDITION
LAFAYETTE COUNTY, MISSISSIPPI

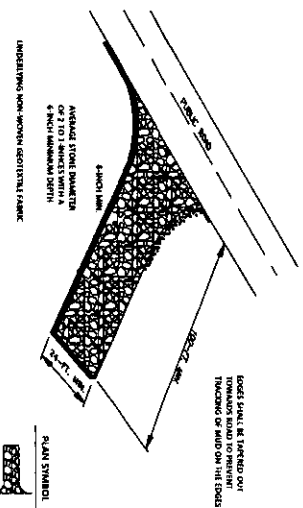


JM ENGINEERING
AND DESIGN, LLC
OSPREY, MS
(662) 201-4463

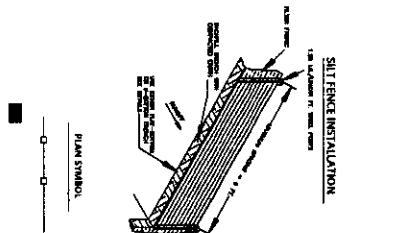
DRAWN BY	JAM
CHECKED BY	JAM
PROJECT NO.	2024
DATE	02/17/2024
SCALE	
REVISION	

C-803-1

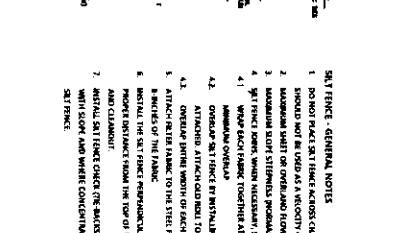
SPECIFICATION		SIZE
ROCK PANO THICKNESS	6 INCHES	
ROCK PANO WIDTH	24 INCHES	
ROCK PANO LENGTH	24 INCHES	
ROCK PANO STONE LENGTH	24 INCHES	



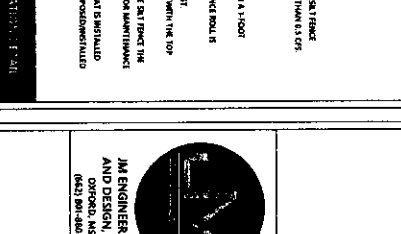
CONSTRUCTION - ENTRANCE DETAIL



CONSTRUCTION - ENTRANCE DETAIL



CONSTRUCTION - ENTRANCE DETAIL



CONSTRUCTION - ENTRANCE DETAIL

CONSTRUCTION - ENTRANCE DETAIL

CONSTRUCTION - ENTRANCE DETAIL

CONSTRUCTION - ENTRANCE DETAIL

CONSTRUCTION - ENTRANCE DETAIL

CONSTRUCTION - ENTRANCE DETAIL

CONSTRUCTION - ENTRANCE DETAIL

CONSTRUCTION - ENTRANCE DETAIL

CONSTRUCTION - ENTRANCE DETAIL

CONSTRUCTION - ENTRANCE DETAIL

CONSTRUCTION - ENTRANCE DETAIL

CONSTRUCTION - ENTRANCE DETAIL

CONSTRUCTION - ENTRANCE DETAIL

CONSTRUCTION - ENTRANCE DETAIL

CONSTRUCTION - ENTRANCE DETAIL

CONSTRUCTION - ENTRANCE DETAIL

CONSTRUCTION - ENTRANCE DETAIL

CONSTRUCTION - ENTRANCE DETAIL

CONSTRUCTION - ENTRANCE DETAIL

CONSTRUCTION - ENTRANCE DETAIL

CONSTRUCTION - ENTRANCE DETAIL

CONSTRUCTION - ENTRANCE DETAIL

CONSTRUCTION - ENTRANCE DETAIL

CONSTRUCTION - ENTRANCE DETAIL

CONSTRUCTION - ENTRANCE DETAIL

CONSTRUCTION - ENTRANCE DETAIL

CONSTRUCTION - ENTRANCE DETAIL

CONSTRUCTION - ENTRANCE DETAIL

CONSTRUCTION - ENTRANCE DETAIL

CONSTRUCTION - ENTRANCE DETAIL

CONSTRUCTION - ENTRANCE DETAIL

CONSTRUCTION - ENTRANCE DETAIL

CONSTRUCTION - ENTRANCE DETAIL

CONSTRUCTION - ENTRANCE DETAIL

CONSTRUCTION - ENTRANCE DETAIL

CONSTRUCTION - ENTRANCE DETAIL

CONSTRUCTION - ENTRANCE DETAIL

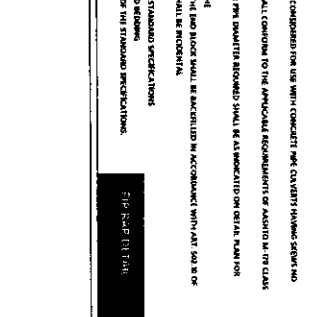
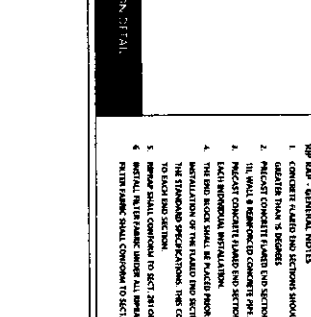
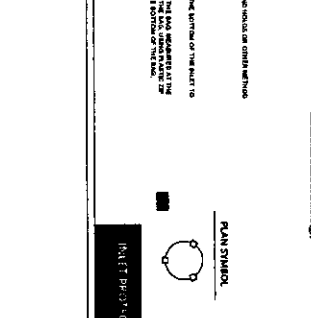
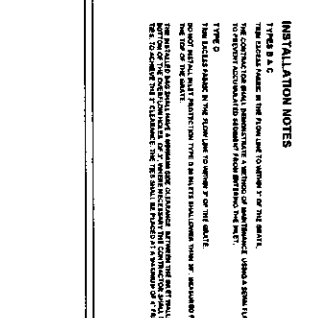
CONSTRUCTION - ENTRANCE DETAIL

CONSTRUCTION - ENTRANCE DETAIL

CONSTRUCTION - ENTRANCE DETAIL

GENERAL NOTES

1. THE PROTECTION SHALL BE INSTALLED ON THE SURFACE OF THE CURB OR ON THE SURFACE OF THE ROADWAY.
2. THE PROTECTION SHALL BE INSTALLED ON THE SURFACE OF THE CURB OR ON THE SURFACE OF THE ROADWAY.
3. THE PROTECTION SHALL BE INSTALLED ON THE SURFACE OF THE CURB OR ON THE SURFACE OF THE ROADWAY.
4. THE PROTECTION SHALL BE INSTALLED ON THE SURFACE OF THE CURB OR ON THE SURFACE OF THE ROADWAY.
5. THE PROTECTION SHALL BE INSTALLED ON THE SURFACE OF THE CURB OR ON THE SURFACE OF THE ROADWAY.



INSTALLATION NOTES

1. THE PROTECTION SHALL BE INSTALLED ON THE SURFACE OF THE CURB OR ON THE SURFACE OF THE ROADWAY.
2. THE PROTECTION SHALL BE INSTALLED ON THE SURFACE OF THE CURB OR ON THE SURFACE OF THE ROADWAY.
3. THE PROTECTION SHALL BE INSTALLED ON THE SURFACE OF THE CURB OR ON THE SURFACE OF THE ROADWAY.
4. THE PROTECTION SHALL BE INSTALLED ON THE SURFACE OF THE CURB OR ON THE SURFACE OF THE ROADWAY.
5. THE PROTECTION SHALL BE INSTALLED ON THE SURFACE OF THE CURB OR ON THE SURFACE OF THE ROADWAY.

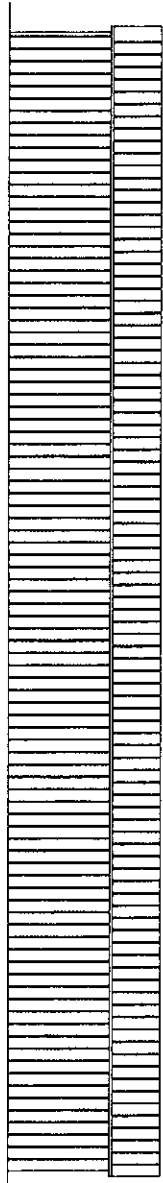
CONSTRUCTION - ENTRANCE DETAIL

EROSION CONTROL DETAILS
WINK ACADEMY- ADDITION
LAFAYETTE COUNTY, MISSISSIPPI

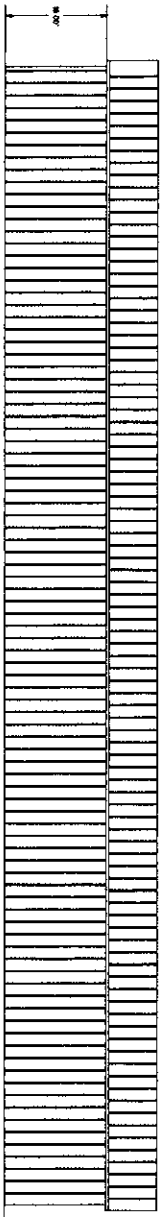
JM ENGINEERING
AND DESIGN, LLC
CORONA, MS
(601) 291-0100

DRAWN BY	JM
CHECKED BY	JM
PROJECT NO.	XXXX
DATE	02/27/2024
SCALE	
REVISION	

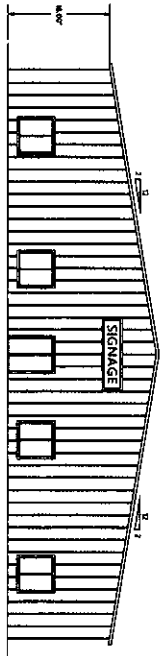
C-804



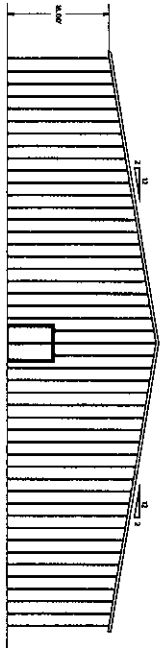
SOUTH ELEVATION



NORTH ELEVATION



EAST ELEVATION



WEST ELEVATION

BUILDING ELEVATIONS
WINK ACADEMY- ADDITION
 LAFAYETTE COUNTY, MISSISSIPPI



JM ENGINEERING
 AND DESIGN, LLC
 OXFORD, MS
 (601) 871-1883

DRAWN BY	JJM
CHECKED BY	JJM
PROJECT NO.	MS00
DATE	02/22/2014
SCALE	1" = 1/8"
REVISION	