

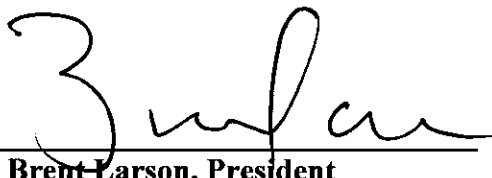
ORDER: APPROVE AN INNOVATIVE CONSTRUCTION MANAGEMENT SITE PLAN AMENDMENT CONTINGENT UPON DEVELOPER MUST PURCHASE A BUILDING PERMIT FOR EACH OF THE THREE POLE BARNs, BUILDING PERMIT FEES SHALL BE DOUBLED AND POLE BARNs MUST BE INSPECTED

Motion was made by John Morgan, duly seconded by Tim Gordon, to approve an Innovative Construction Management Site Plan amendment contingent upon developer must purchase a building permit for each of the three pole barns, building permit fees shall be doubled and pole barns must be inspected.

The vote on the motion was as follows:

Supervisor Brent Larson, voted yes
Supervisor John Morgan, voted yes
Supervisor Tim Gordon, voted yes
Supervisor Scott Allen, voted yes
Supervisor Greg Bynum, voted yes

After the vote, President Larson, declared the motion carried, this the 18th day of March, 2024.



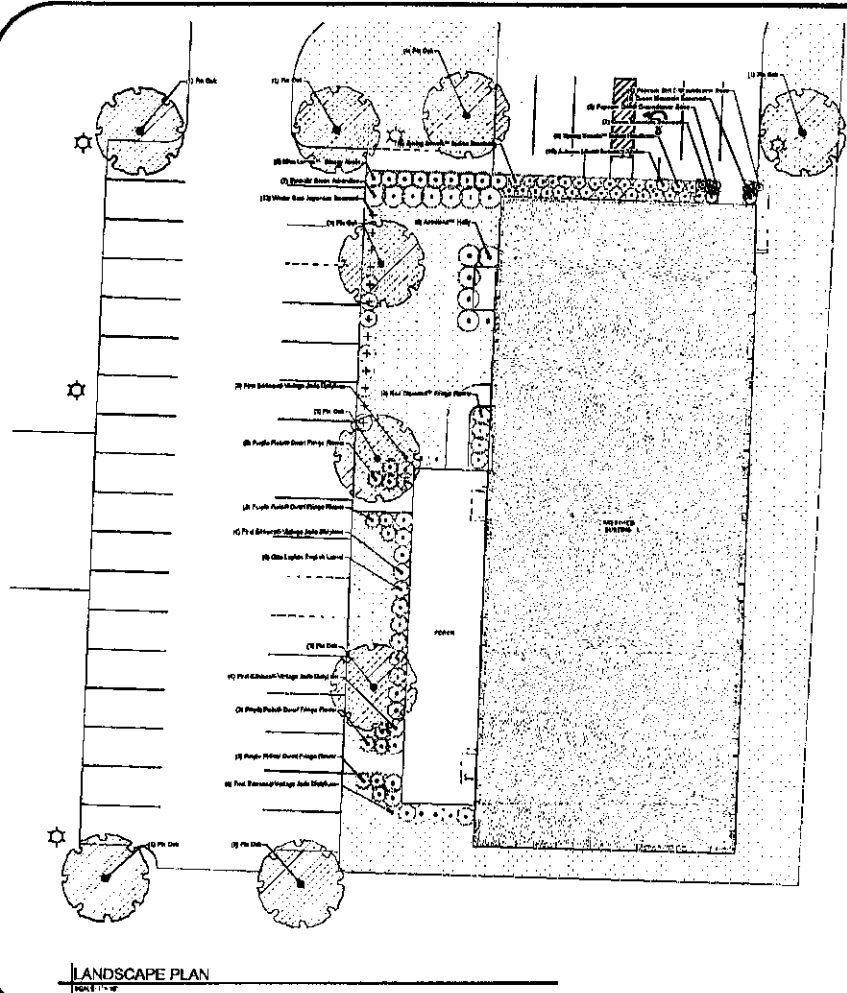
**Brent Larson, President
Board of Supervisors**



Mike Roberts, Chancery Clerk

The Planning Commission recommends approval of the Innovative Construction Management site plan amendment (Planning Commission Case 24-202) contingent upon the following:

- The developer must purchase a building permit for each of the three pole barns.
- The building permit fees shall be double.
- The pole barns must be inspected.



PLANT SCHEDULE

NO.	SYMBOL	PLANT NAME	QTY	DATE	BY
01	(Symbol)	10' Pine Oak	2	10/10/10	ABC
02	(Symbol)	11' Pine Oak	2	10/10/10	ABC
03	(Symbol)	12' Pine Oak	2	10/10/10	ABC
04	(Symbol)	13' Pine Oak	2	10/10/10	ABC
05	(Symbol)	14' Pine Oak	2	10/10/10	ABC
06	(Symbol)	15' Pine Oak	2	10/10/10	ABC
07	(Symbol)	16' Pine Oak	2	10/10/10	ABC
08	(Symbol)	17' Pine Oak	2	10/10/10	ABC
09	(Symbol)	18' Pine Oak	2	10/10/10	ABC
10	(Symbol)	19' Pine Oak	2	10/10/10	ABC
11	(Symbol)	20' Pine Oak	2	10/10/10	ABC
12	(Symbol)	21' Pine Oak	2	10/10/10	ABC
13	(Symbol)	22' Pine Oak	2	10/10/10	ABC
14	(Symbol)	23' Pine Oak	2	10/10/10	ABC
15	(Symbol)	24' Pine Oak	2	10/10/10	ABC
16	(Symbol)	25' Pine Oak	2	10/10/10	ABC
17	(Symbol)	26' Pine Oak	2	10/10/10	ABC
18	(Symbol)	27' Pine Oak	2	10/10/10	ABC
19	(Symbol)	28' Pine Oak	2	10/10/10	ABC
20	(Symbol)	29' Pine Oak	2	10/10/10	ABC
21	(Symbol)	30' Pine Oak	2	10/10/10	ABC
22	(Symbol)	31' Pine Oak	2	10/10/10	ABC
23	(Symbol)	32' Pine Oak	2	10/10/10	ABC
24	(Symbol)	33' Pine Oak	2	10/10/10	ABC
25	(Symbol)	34' Pine Oak	2	10/10/10	ABC
26	(Symbol)	35' Pine Oak	2	10/10/10	ABC
27	(Symbol)	36' Pine Oak	2	10/10/10	ABC
28	(Symbol)	37' Pine Oak	2	10/10/10	ABC
29	(Symbol)	38' Pine Oak	2	10/10/10	ABC
30	(Symbol)	39' Pine Oak	2	10/10/10	ABC
31	(Symbol)	40' Pine Oak	2	10/10/10	ABC
32	(Symbol)	41' Pine Oak	2	10/10/10	ABC
33	(Symbol)	42' Pine Oak	2	10/10/10	ABC
34	(Symbol)	43' Pine Oak	2	10/10/10	ABC
35	(Symbol)	44' Pine Oak	2	10/10/10	ABC
36	(Symbol)	45' Pine Oak	2	10/10/10	ABC
37	(Symbol)	46' Pine Oak	2	10/10/10	ABC
38	(Symbol)	47' Pine Oak	2	10/10/10	ABC
39	(Symbol)	48' Pine Oak	2	10/10/10	ABC
40	(Symbol)	49' Pine Oak	2	10/10/10	ABC
41	(Symbol)	50' Pine Oak	2	10/10/10	ABC
42	(Symbol)	51' Pine Oak	2	10/10/10	ABC
43	(Symbol)	52' Pine Oak	2	10/10/10	ABC
44	(Symbol)	53' Pine Oak	2	10/10/10	ABC
45	(Symbol)	54' Pine Oak	2	10/10/10	ABC
46	(Symbol)	55' Pine Oak	2	10/10/10	ABC
47	(Symbol)	56' Pine Oak	2	10/10/10	ABC
48	(Symbol)	57' Pine Oak	2	10/10/10	ABC
49	(Symbol)	58' Pine Oak	2	10/10/10	ABC
50	(Symbol)	59' Pine Oak	2	10/10/10	ABC
51	(Symbol)	60' Pine Oak	2	10/10/10	ABC
52	(Symbol)	61' Pine Oak	2	10/10/10	ABC
53	(Symbol)	62' Pine Oak	2	10/10/10	ABC
54	(Symbol)	63' Pine Oak	2	10/10/10	ABC
55	(Symbol)	64' Pine Oak	2	10/10/10	ABC
56	(Symbol)	65' Pine Oak	2	10/10/10	ABC
57	(Symbol)	66' Pine Oak	2	10/10/10	ABC
58	(Symbol)	67' Pine Oak	2	10/10/10	ABC
59	(Symbol)	68' Pine Oak	2	10/10/10	ABC
60	(Symbol)	69' Pine Oak	2	10/10/10	ABC
61	(Symbol)	70' Pine Oak	2	10/10/10	ABC
62	(Symbol)	71' Pine Oak	2	10/10/10	ABC
63	(Symbol)	72' Pine Oak	2	10/10/10	ABC
64	(Symbol)	73' Pine Oak	2	10/10/10	ABC
65	(Symbol)	74' Pine Oak	2	10/10/10	ABC
66	(Symbol)	75' Pine Oak	2	10/10/10	ABC
67	(Symbol)	76' Pine Oak	2	10/10/10	ABC
68	(Symbol)	77' Pine Oak	2	10/10/10	ABC
69	(Symbol)	78' Pine Oak	2	10/10/10	ABC
70	(Symbol)	79' Pine Oak	2	10/10/10	ABC
71	(Symbol)	80' Pine Oak	2	10/10/10	ABC
72	(Symbol)	81' Pine Oak	2	10/10/10	ABC
73	(Symbol)	82' Pine Oak	2	10/10/10	ABC
74	(Symbol)	83' Pine Oak	2	10/10/10	ABC
75	(Symbol)	84' Pine Oak	2	10/10/10	ABC
76	(Symbol)	85' Pine Oak	2	10/10/10	ABC
77	(Symbol)	86' Pine Oak	2	10/10/10	ABC
78	(Symbol)	87' Pine Oak	2	10/10/10	ABC
79	(Symbol)	88' Pine Oak	2	10/10/10	ABC
80	(Symbol)	89' Pine Oak	2	10/10/10	ABC
81	(Symbol)	90' Pine Oak	2	10/10/10	ABC
82	(Symbol)	91' Pine Oak	2	10/10/10	ABC
83	(Symbol)	92' Pine Oak	2	10/10/10	ABC
84	(Symbol)	93' Pine Oak	2	10/10/10	ABC
85	(Symbol)	94' Pine Oak	2	10/10/10	ABC
86	(Symbol)	95' Pine Oak	2	10/10/10	ABC
87	(Symbol)	96' Pine Oak	2	10/10/10	ABC
88	(Symbol)	97' Pine Oak	2	10/10/10	ABC
89	(Symbol)	98' Pine Oak	2	10/10/10	ABC
90	(Symbol)	99' Pine Oak	2	10/10/10	ABC
91	(Symbol)	100' Pine Oak	2	10/10/10	ABC



REVISIONS:

NO.	DATE	DESCRIPTION
1		
2		
3		
4		
5		
6		
7		
8		
9		
10		

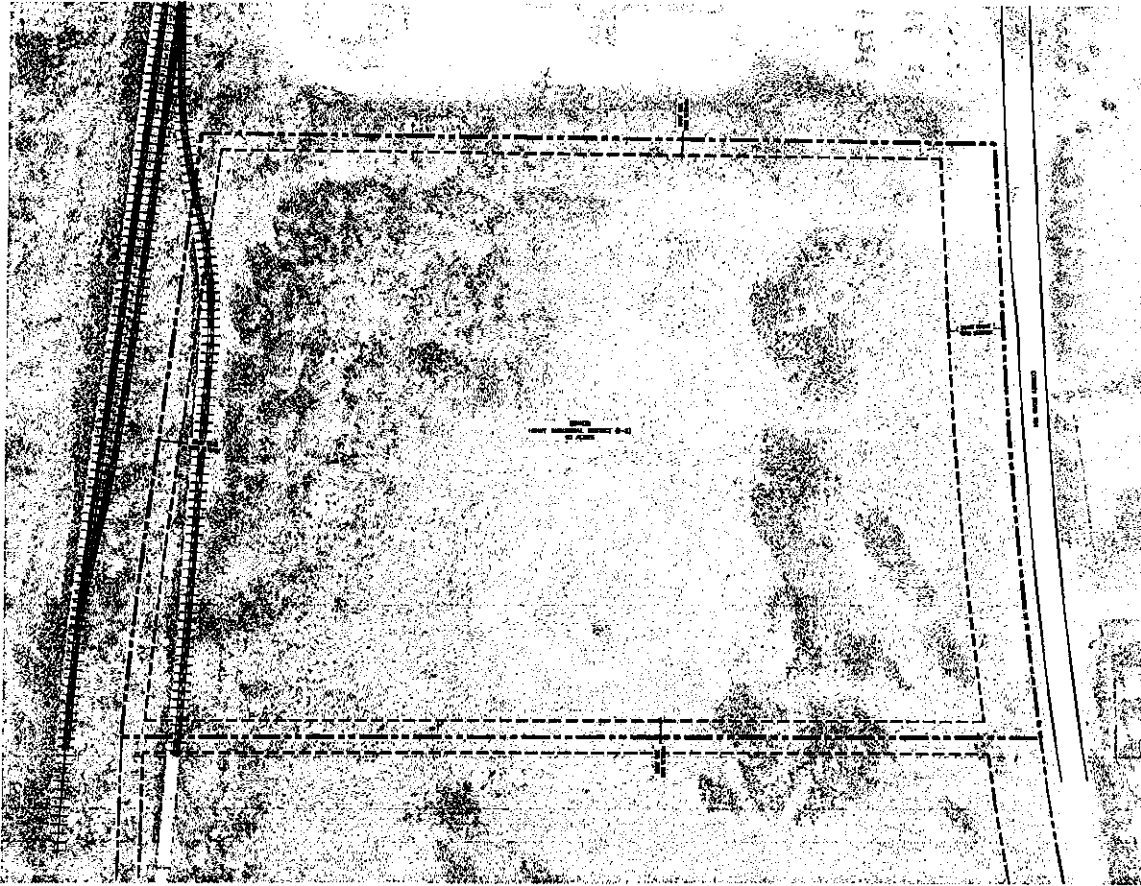
NOT FOR CONSTRUCTION

LANDSCAPE PLAN
FOR
ICM CONSTRUCTION OFFICE
OXFORD, LAFALETTE COUNTY, MISSISSIPPI

DATE	BY	SCALE
10/10/10	ABC	1"=20'
10/10/10	ABC	1"=20'
10/10/10	ABC	1"=20'

L101

DATE: 11/18/2010 10:58:10 AM



REVISIONS:		
NO.	DATE	DESCRIPTION

NOT FOR CONSTRUCTION

EXISTING CONDITIONS & AERIAL
 FOR
 ICM CONSTRUCTION
 OFFICE AND WAREHOUSE
 OXFORD, LAFAYETTE COUNTY, MISSISSIPPI

DATE	BY	DESCRIPTION

PROJECT: C102

1 EXISTING CONDITIONS & AERIAL





REVISIONS:		
NO.	DATE	DESCRIPTION

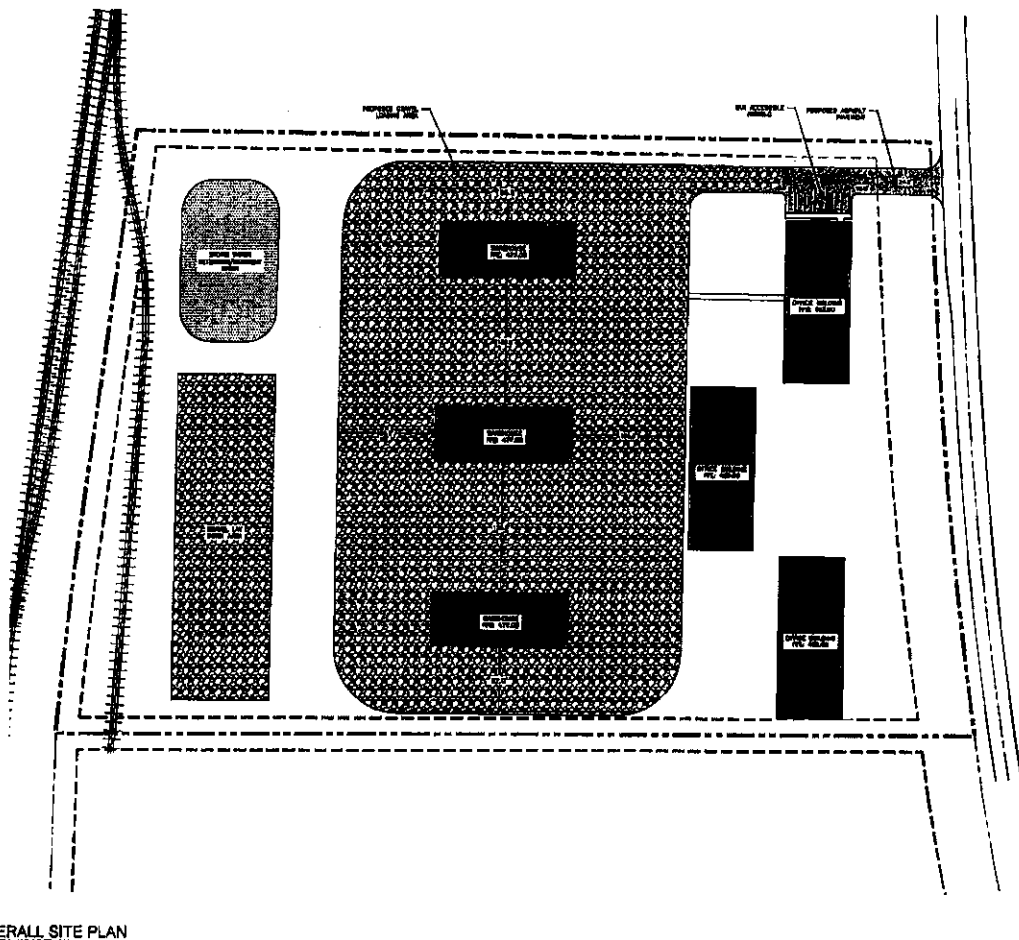
NOT FOR
CONSTRUCTION

OVERALL SITE PLAN
FOR
ICM CONSTRUCTION
OFFICE AND WAREHOUSE
OXFORD, LAFAYETTE COUNTY, MISSISSIPPI

DATE	12/12/12	BY	
DESIGNED BY		CHECKED BY	
DRAWN BY		DATE	
PROJECT NO.		SHEET NO.	

PROJECT: ICM CONSTRUCTION OFFICE AND WAREHOUSE
OWNER: ICM CONSTRUCTION
LOCATION: OXFORD, LAFAYETTE COUNTY, MISSISSIPPI
SCALE: AS SHOWN
DATE: 12/12/12

C103



1 OVERALL SITE PLAN
SCALE: 1" = 40'

ICM CONSTRUCTION, INC. 1000 W. STATE ST. SUITE 100 OXFORD, MS 38655
 PHONE: 662-234-1111 FAX: 662-234-1112
 WWW.ICMCONSTRUCTION.COM

