

**ORDER: TAKE OFF THE TABLE AND ACCEPT PLANNING COMMISSION'S  
RECOMMENDATION TO APPROVE SOUTHERN LAND HOLDINGS, LLC  
PLANNED UNIT DEVELOPMENT**

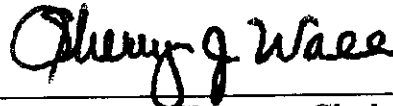
Motion was made by Chad McLarty, duly seconded by Kevin Frye, to Take off the Table and accept Planning Commission's recommendation to approve Southern Land Holdings, LLC Planned Unit Development..

The vote on the motion was as follows:

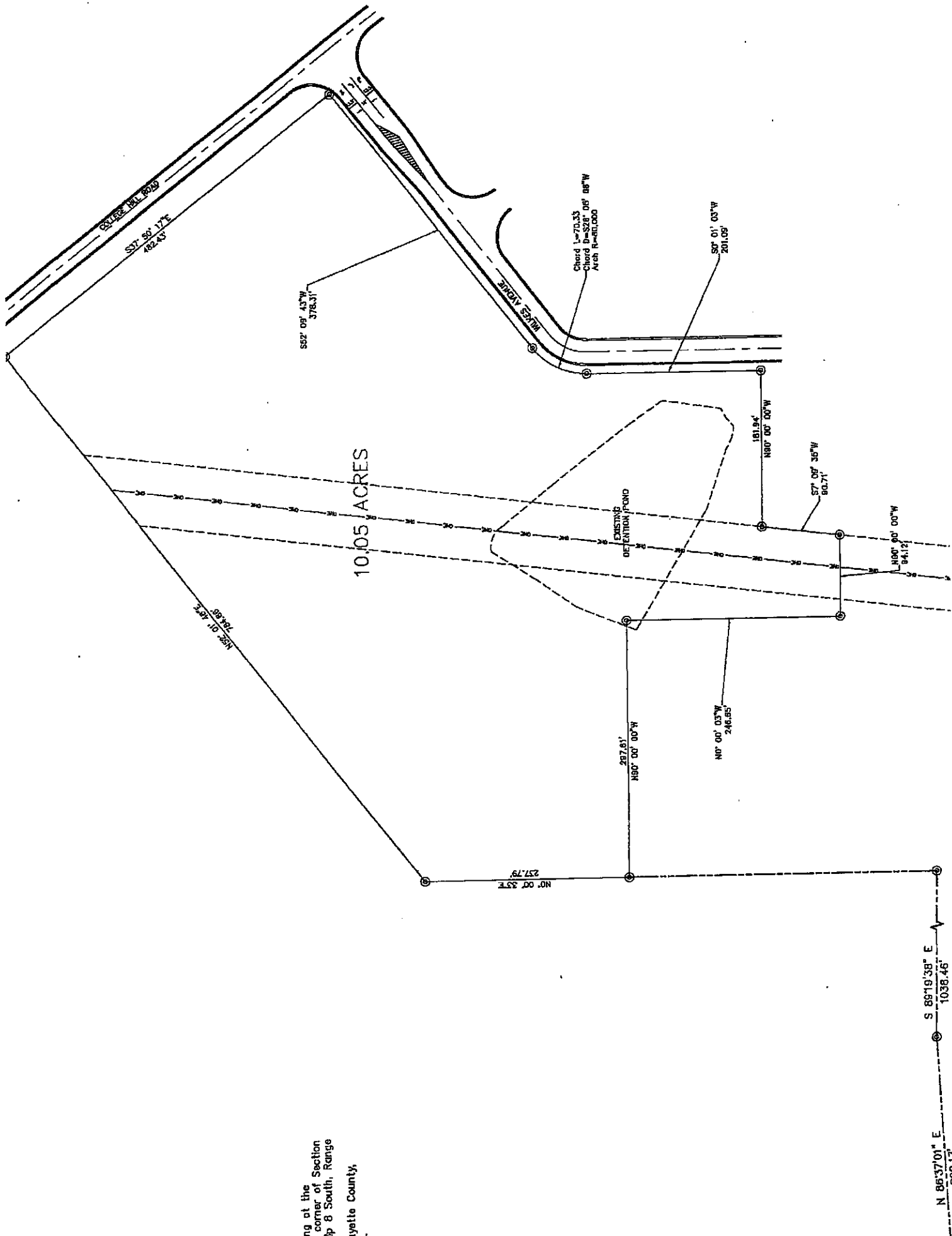
Supervisor Kevin Frye, voted yes  
Supervisor Jeff Busby, voted yes  
Supervisor David Rikard, voted yes  
Supervisor Chad McLarty, voted yes  
Supervisor Mike Roberts, voted yes

After the vote, President Busby, declared the motion carried, this the 5<sup>th</sup> day of August, 2019.

  
\_\_\_\_\_  
Jeff Busby, President  
Board of Supervisors

  
\_\_\_\_\_  
Sherry Wall, Chancery Clerk

beginning at the  
west corner of Section  
8 South, Range  
10 North, T1N, R10E,  
Afton Township,  
Afton County,  
North Dakota.



|     |                  |
|-----|------------------|
| 07  | N83° 00' 48.00"E |
| 08  | N82° 00' 48.00"E |
| 09  | N81° 00' 48.00"E |
| 10  | N80° 00' 48.00"E |
| 11  | N79° 00' 48.00"E |
| 12  | N78° 00' 48.00"E |
| 13  | N77° 00' 48.00"E |
| 14  | N76° 00' 48.00"E |
| 15  | N75° 00' 48.00"E |
| 16  | N74° 00' 48.00"E |
| 17  | N73° 00' 48.00"E |
| 18  | N72° 00' 48.00"E |
| 19  | N71° 00' 48.00"E |
| 20  | N70° 00' 48.00"E |
| 21  | N69° 00' 48.00"E |
| 22  | N68° 00' 48.00"E |
| 23  | N67° 00' 48.00"E |
| 24  | N66° 00' 48.00"E |
| 25  | N65° 00' 48.00"E |
| 26  | N64° 00' 48.00"E |
| 27  | N63° 00' 48.00"E |
| 28  | N62° 00' 48.00"E |
| 29  | N61° 00' 48.00"E |
| 30  | N60° 00' 48.00"E |
| 31  | N59° 00' 48.00"E |
| 32  | N58° 00' 48.00"E |
| 33  | N57° 00' 48.00"E |
| 34  | N56° 00' 48.00"E |
| 35  | N55° 00' 48.00"E |
| 36  | N54° 00' 48.00"E |
| 37  | N53° 00' 48.00"E |
| 38  | N52° 00' 48.00"E |
| 39  | N51° 00' 48.00"E |
| 40  | N50° 00' 48.00"E |
| 41  | N49° 00' 48.00"E |
| 42  | N48° 00' 48.00"E |
| 43  | N47° 00' 48.00"E |
| 44  | N46° 00' 48.00"E |
| 45  | N45° 00' 48.00"E |
| 46  | N44° 00' 48.00"E |
| 47  | N43° 00' 48.00"E |
| 48  | N42° 00' 48.00"E |
| 49  | N41° 00' 48.00"E |
| 50  | N40° 00' 48.00"E |
| 51  | N39° 00' 48.00"E |
| 52  | N38° 00' 48.00"E |
| 53  | N37° 00' 48.00"E |
| 54  | N36° 00' 48.00"E |
| 55  | N35° 00' 48.00"E |
| 56  | N34° 00' 48.00"E |
| 57  | N33° 00' 48.00"E |
| 58  | N32° 00' 48.00"E |
| 59  | N31° 00' 48.00"E |
| 60  | N30° 00' 48.00"E |
| 61  | N29° 00' 48.00"E |
| 62  | N28° 00' 48.00"E |
| 63  | N27° 00' 48.00"E |
| 64  | N26° 00' 48.00"E |
| 65  | N25° 00' 48.00"E |
| 66  | N24° 00' 48.00"E |
| 67  | N23° 00' 48.00"E |
| 68  | N22° 00' 48.00"E |
| 69  | N21° 00' 48.00"E |
| 70  | N20° 00' 48.00"E |
| 71  | N19° 00' 48.00"E |
| 72  | N18° 00' 48.00"E |
| 73  | N17° 00' 48.00"E |
| 74  | N16° 00' 48.00"E |
| 75  | N15° 00' 48.00"E |
| 76  | N14° 00' 48.00"E |
| 77  | N13° 00' 48.00"E |
| 78  | N12° 00' 48.00"E |
| 79  | N11° 00' 48.00"E |
| 80  | N10° 00' 48.00"E |
| 81  | N09° 00' 48.00"E |
| 82  | N08° 00' 48.00"E |
| 83  | N07° 00' 48.00"E |
| 84  | N06° 00' 48.00"E |
| 85  | N05° 00' 48.00"E |
| 86  | N04° 00' 48.00"E |
| 87  | N03° 00' 48.00"E |
| 88  | N02° 00' 48.00"E |
| 89  | N01° 00' 48.00"E |
| 90  | N00° 00' 48.00"E |
| 91  | S00° 00' 48.00"E |
| 92  | S01° 00' 48.00"E |
| 93  | S02° 00' 48.00"E |
| 94  | S03° 00' 48.00"E |
| 95  | S04° 00' 48.00"E |
| 96  | S05° 00' 48.00"E |
| 97  | S06° 00' 48.00"E |
| 98  | S07° 00' 48.00"E |
| 99  | S08° 00' 48.00"E |
| 100 | S09° 00' 48.00"E |

|      |                   |
|------|-------------------|
| 1161 | N88° 00' 17.237"E |
| 1162 | N87° 00' 17.237"E |
| 1163 | N86° 00' 17.237"E |
| 1164 | N85° 00' 17.237"E |
| 1165 | N84° 00' 17.237"E |
| 1166 | N83° 00' 17.237"E |
| 1167 | N82° 00' 17.237"E |
| 1168 | N81° 00' 17.237"E |
| 1169 | N80° 00' 17.237"E |
| 1170 | N79° 00' 17.237"E |
| 1171 | N78° 00' 17.237"E |
| 1172 | N77° 00' 17.237"E |
| 1173 | N76° 00' 17.237"E |
| 1174 | N75° 00' 17.237"E |
| 1175 | N74° 00' 17.237"E |
| 1176 | N73° 00' 17.237"E |
| 1177 | N72° 00' 17.237"E |
| 1178 | N71° 00' 17.237"E |
| 1179 | N70° 00' 17.237"E |
| 1180 | N69° 00' 17.237"E |
| 1181 | N68° 00' 17.237"E |
| 1182 | N67° 00' 17.237"E |
| 1183 | N66° 00' 17.237"E |
| 1184 | N65° 00' 17.237"E |
| 1185 | N64° 00' 17.237"E |
| 1186 | N63° 00' 17.237"E |
| 1187 | N62° 00' 17.237"E |
| 1188 | N61° 00' 17.237"E |
| 1189 | N60° 00' 17.237"E |
| 1190 | N59° 00' 17.237"E |
| 1191 | N58° 00' 17.237"E |
| 1192 | N57° 00' 17.237"E |
| 1193 | N56° 00' 17.237"E |
| 1194 | N55° 00' 17.237"E |
| 1195 | N54° 00' 17.237"E |
| 1196 | N53° 00' 17.237"E |
| 1197 | N52° 00' 17.237"E |
| 1198 | N51° 00' 17.237"E |
| 1199 | N50° 00' 17.237"E |
| 1200 | N49° 00' 17.237"E |
| 1201 | N48° 00' 17.237"E |
| 1202 | N47° 00' 17.237"E |
| 1203 | N46° 00' 17.237"E |
| 1204 | N45° 00' 17.237"E |
| 1205 | N44° 00' 17.237"E |
| 1206 | N43° 00' 17.237"E |
| 1207 | N42° 00' 17.237"E |
| 1208 | N41° 00' 17.237"E |
| 1209 | N40° 00' 17.237"E |
| 1210 | N39° 00' 17.237"E |
| 1211 | N38° 00' 17.237"E |
| 1212 | N37° 00' 17.237"E |
| 1213 | N36° 00' 17.237"E |
| 1214 | N35° 00' 17.237"E |
| 1215 | N34° 00' 17.237"E |
| 1216 | N33° 00' 17.237"E |
| 1217 | N32° 00' 17.237"E |
| 1218 | N31° 00' 17.237"E |
| 1219 | N30° 00' 17.237"E |
| 1220 | N29° 00' 17.237"E |
| 1221 | N28° 00' 17.237"E |
| 1222 | N27° 00' 17.237"E |
| 1223 | N26° 00' 17.237"E |
| 1224 | N25° 00' 17.237"E |
| 1225 | N24° 00' 17.237"E |
| 1226 | N23° 00' 17.237"E |
| 1227 | N22° 00' 17.237"E |
| 1228 | N21° 00' 17.237"E |
| 1229 | N20° 00' 17.237"E |
| 1230 | N19° 00' 17.237"E |
| 1231 | N18° 00' 17.237"E |
| 1232 | N17° 00' 17.237"E |
| 1233 | N16° 00' 17.237"E |
| 1234 | N15° 00' 17.237"E |
| 1235 | N14° 00' 17.237"E |
| 1236 | N13° 00' 17.237"E |
| 1237 | N12° 00' 17.237"E |
| 1238 | N11° 00' 17.237"E |
| 1239 | N10° 00' 17.237"E |
| 1240 | N09° 00' 17.237"E |
| 1241 | N08° 00' 17.237"E |
| 1242 | N07° 00' 17.237"E |
| 1243 | N06° 00' 17.237"E |
| 1244 | N05° 00' 17.237"E |
| 1245 | N04° 00' 17.237"E |
| 1246 | N03° 00' 17.237"E |
| 1247 | N02° 00' 17.237"E |
| 1248 | N01° 00' 17.237"E |
| 1249 | N00° 00' 17.237"E |
| 1250 | S00° 00' 17.237"E |
| 1251 | S01° 00' 17.237"E |
| 1252 | S02° 00' 17.237"E |
| 1253 | S03° 00' 17.237"E |
| 1254 | S04° 00' 17.237"E |
| 1255 | S05° 00' 17.237"E |
| 1256 | S06° 00' 17.237"E |
| 1257 | S07° 00' 17.237"E |
| 1258 | S08° 00' 17.237"E |
| 1259 | S09° 00' 17.237"E |
| 1260 | S10° 00' 17.237"E |
| 1261 | S11° 00' 17.237"E |
| 1262 | S12° 00' 17.237"E |
| 1263 | S13° 00' 17.237"E |
| 1264 | S14° 00' 17.237"E |
| 1265 | S15° 00' 17.237"E |
| 1266 | S16° 00' 17.237"E |
| 1267 | S17° 00' 17.237"E |
| 1268 | S18° 00' 17.237"E |
| 1269 | S19° 00' 17.237"E |
| 1270 | S20° 00' 17.237"E |

|     |                |
|-----|----------------|
| 08  | N187° 26' 00"E |
| 09  | N186° 54' 00"E |
| 10  | N186° 22' 00"E |
| 11  | N185° 50' 00"E |
| 12  | N185° 18' 00"E |
| 13  | N184° 46' 00"E |
| 14  | N184° 14' 00"E |
| 15  | N183° 42' 00"E |
| 16  | N183° 10' 00"E |
| 17  | N182° 38' 00"E |
| 18  | N182° 06' 00"E |
| 19  | N181° 34' 00"E |
| 20  | N181° 02' 00"E |
| 21  | N180° 30' 00"E |
| 22  | N179° 58' 00"E |
| 23  | N179° 26' 00"E |
| 24  | N178° 54' 00"E |
| 25  | N178° 22' 00"E |
| 26  | N177° 50' 00"E |
| 27  | N177° 18' 00"E |
| 28  | N176° 46' 00"E |
| 29  | N176° 14' 00"E |
| 30  | N175° 42' 00"E |
| 31  | N175° 10' 00"E |
| 32  | N174° 38' 00"E |
| 33  | N174° 06' 00"E |
| 34  | N173° 34' 00"E |
| 35  | N173° 02' 00"E |
| 36  | N172° 30' 00"E |
| 37  | N171° 58' 00"E |
| 38  | N171° 26' 00"E |
| 39  | N170° 54' 00"E |
| 40  | N170° 22' 00"E |
| 41  | N169° 50' 00"E |
| 42  | N169° 18' 00"E |
| 43  | N168° 46' 00"E |
| 44  | N168° 14' 00"E |
| 45  | N167° 42' 00"E |
| 46  | N167° 10' 00"E |
| 47  | N166° 38' 00"E |
| 48  | N166° 06' 00"E |
| 49  | N165° 34' 00"E |
| 50  | N165° 02' 00"E |
| 51  | N164° 30' 00"E |
| 52  | N163° 58' 00"E |
| 53  | N163° 26' 00"E |
| 54  | N162° 54' 00"E |
| 55  | N162° 22' 00"E |
| 56  | N161° 50' 00"E |
| 57  | N161° 18' 00"E |
| 58  | N160° 46' 00"E |
| 59  | N160° 14' 00"E |
| 60  | N159° 42' 00"E |
| 61  | N159° 10' 00"E |
| 62  | N158° 38' 00"E |
| 63  | N158° 06' 00"E |
| 64  | N157° 34' 00"E |
| 65  | N157° 02' 00"E |
| 66  | N156° 30' 00"E |
| 67  | N155° 58' 00"E |
| 68  | N155° 26' 00"E |
| 69  | N154° 54' 00"E |
| 70  | N154° 22' 00"E |
| 71  | N153° 50' 00"E |
| 72  | N153° 18' 00"E |
| 73  | N152° 46' 00"E |
| 74  | N152° 14' 00"E |
| 75  | N151° 42' 00"E |
| 76  | N151° 10' 00"E |
| 77  | N150° 38' 00"E |
| 78  | N150° 06' 00"E |
| 79  | N149° 34' 00"E |
| 80  | N149° 02' 00"E |
| 81  | N148° 30' 00"E |
| 82  | N147° 58' 00"E |
| 83  | N147° 26' 00"E |
| 84  | N146° 54' 00"E |
| 85  | N146° 22' 00"E |
| 86  | N145° 50' 00"E |
| 87  | N145° 18' 00"E |
| 88  | N144° 46' 00"E |
| 89  | N144° 14' 00"E |
| 90  | N143° 42' 00"E |
| 91  | N143° 10' 00"E |
| 92  | N142° 38' 00"E |
| 93  | N142° 06' 00"E |
| 94  | N141° 34' 00"E |
| 95  | N141° 02' 00"E |
| 96  | N140° 30' 00"E |
| 97  | N139° 58' 00"E |
| 98  | N139° 26' 00"E |
| 99  | N138° 54' 00"E |
| 100 | N138° 22' 00"E |

